

Datasheet for ABIN1311810

## Myosin ID Protein (MYO1D) (AA 1-436) (GST tag)



[Go to Product page](#)

### 1 Image

#### Overview

Quantity:	10 µg
Target:	Myosin ID (MYO1D)
Protein Characteristics:	AA 1-436
Origin:	Human
Source:	Wheat germ
Protein Type:	Recombinant
Purification tag / Conjugate:	This Myosin ID protein is labelled with GST tag.
Application:	Western Blotting (WB), ELISA, Affinity Purification (AP), Antibody Array (AA)

#### Product Details

Purpose:	MYO1D (Human) Recombinant Protein (P01)
Sequence:	MAEQESLEFG KADFLMDTV SMPEFMANLR LRFKGRITYT FIGEVVSVN PYKLLNIYGR DTIEQYKGRE LYERPPHLFA IADAAYKAMK RRSKDTCIVI SGESGAGKTE ASKYIMQYIA AITNPSQRAE VERVKNMLLK SNCVLEAFGN AKTNRNDNSS RFGKYMDINF DFKGDPIGGH INNYLLEKSR VIVQPGERS FHSFYQLLQG GSEQMLRSLH LQKSLSSYNY IHVGAQLKSS INDAAEFRVW ADAMKVIGFK PEEIQTVYKI LAAILHLGNL KFWVDGDTPL IENGKVVSI AELLSTKTDM VEKALLYRTV ATGRDIIDKQ HTEQEASYGR DAFAKAIYER LFCWIVTRIN DIIEVKNYDT TIHGKNTVIG VLDIYGFEIF DNNSFEQFCI NYCNEKLQQL FIQLVLKQEQ EEYQREGIPW KHVGLL
Characteristics:	Human MYO1D full-length ORF ( AAH30602.1, 1 a.a. - 436 a.a.) recombinant protein with GST-tag at N-terminal.

## Product Details

---

Purification: in vitro wheat germ expression system

## Target Details

---

Target: Myosin ID (MYO1D)

Alternative Name: MYO1D ([MYO1D Products](#))

Background: Full Gene Name: myosin ID  
Synonyms: KIAA0727,myr4

Gene ID: 4642

## Application Details

---

Application Notes: Optimal working dilution should be determined by the investigator.

Comment: Preparation method: in vitro, wheat germ expression system  
Product Quality tested by: 12.5% SDS-PAGE Stained with Coomassie Blue.

Restrictions: For Research Use only

## Handling

---

Buffer: 50 mM Tris-HCl, 10 mM reduced Glutathione, pH =8.0 in the elution buffer.

Handling Advice: Aliquot to avoid repeated freezing and thawing.

Storage: -80 °C

Storage Comment: Best use within three months from the date of receipt of this protein.

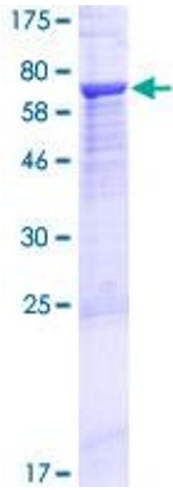


Image 1.