

Datasheet for ABIN1311812

Myosin ID Protein (MYO1D) (AA 211-310) (GST tag)



[Go to Product page](#)

1 Image

Overview

Quantity:	10 µg
Target:	Myosin ID (MYO1D)
Protein Characteristics:	AA 211-310
Origin:	Human
Source:	Wheat germ
Protein Type:	Recombinant
Purification tag / Conjugate:	This Myosin ID protein is labelled with GST tag.
Application:	Western Blotting (WB), ELISA, Affinity Purification (AP), Antibody Array (AA)

Product Details

Purpose:	MYO1D (Human) Recombinant Protein (Q01)
Sequence:	GSEQMLRSLH LQKSLSSYNY IHVGAQLKSS INDAAEFRVV ADAMKVIGFK PEEIQTVYKI LAILHLGNL KVVVDGDTPL IENGKVSII AELLSTKTDM
Characteristics:	Human MYO1D partial ORF (NP_056009, 211 a.a. - 310 a.a.) recombinant protein with GST-tag at N-terminal.
Purification:	in vitro wheat germ expression system

Target Details

Target:	Myosin ID (MYO1D)
Alternative Name:	MYO1D (MYO1D Products)

Target Details

Background:	Full Gene Name: myosin ID Synonyms: KIAA0727,myr4
Gene ID:	4642
NCBI Accession:	NM_015194

Application Details

Application Notes:	Optimal working dilution should be determined by the investigator.
Comment:	Preparation method: in vitro, wheat germ expression system Product Quality tested by: 12.5% SDS-PAGE Stained with Coomassie Blue.
Restrictions:	For Research Use only

Handling

Buffer:	50 mM Tris-HCl, 10 mM reduced Glutathione, pH =8.0 in the elution buffer.
Handling Advice:	Aliquot to avoid repeated freezing and thawing.
Storage:	-80 °C
Storage Comment:	Best use within three months from the date of receipt of this protein.

Images

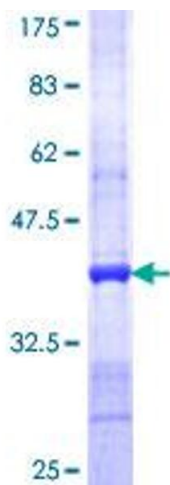


Image 1.