



[Go to Product page](#)

Datasheet for ABIN1311849

## Myoferlin Protein (MYOF) (AA 655-754) (GST tag)

### 1 Image

#### Overview

Quantity:	10 µg
Target:	Myoferlin (MYOF)
Protein Characteristics:	AA 655-754
Origin:	Human
Source:	Wheat germ
Protein Type:	Recombinant
Purification tag / Conjugate:	This Myoferlin protein is labelled with GST tag.
Application:	Western Blotting (WB), Affinity Purification (AP), Antibody Array (AA), ELISA

#### Product Details

Purpose:	FER1L3 (Human) Recombinant Protein (Q01)
Sequence:	DAVNTLLAMA ERLQTNIEAL KSGIQGKIPA NQLAELWLKL IDEVIEDTRY TLPLTEGKAN VTVLDTQIRK LRSRSLSQIH EAAVRMRSEA TDVKSTLAEI
Characteristics:	Human FER1L3 partial ORF ( NP_038479, 655 a.a. - 754 a.a.) recombinant protein with GST-tag at N-terminal.
Purification:	in vitro wheat germ expression system

#### Target Details

Target:	Myoferlin (MYOF)
Alternative Name:	MYOF ( <a href="#">MYOF Products</a> )

## Target Details

Background:	Full Gene Name: myoferlin Synonyms: FER1L3,FLJ36571,FLJ90777
Gene ID:	26509
NCBI Accession:	<a href="#">NM_013451</a>

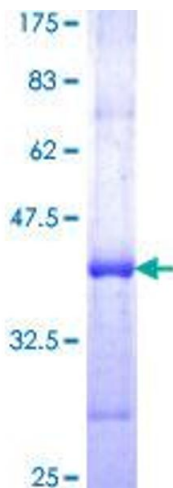
## Application Details

Application Notes:	Optimal working dilution should be determined by the investigator.
Comment:	Preparation method: in vitro, wheat germ expression system Product Quality tested by: 12.5% SDS-PAGE Stained with Coomassie Blue.
Restrictions:	For Research Use only

## Handling

Buffer:	50 mM Tris-HCl, 10 mM reduced Glutathione, pH =8.0 in the elution buffer.
Handling Advice:	Aliquot to avoid repeated freezing and thawing.
Storage:	-80 °C
Storage Comment:	Best use within three months from the date of receipt of this protein.

## Images



**Image 1.**