



[Go to Product page](#)

Datasheet for ABIN1311853

## Myomesin 1 Protein (MYOM1) (AA 1586-1684) (GST tag)

### 1 Image

#### Overview

Quantity:	10 µg
Target:	Myomesin 1 (MYOM1)
Protein Characteristics:	AA 1586-1684
Origin:	Human
Source:	Wheat germ
Protein Type:	Recombinant
Purification tag / Conjugate:	This Myomesin 1 protein is labelled with GST tag.
Application:	ELISA, Affinity Purification (AP), Antibody Array (AA), Western Blotting (WB)

#### Product Details

Purpose:	MYOM1 (Human) Recombinant Protein (Q01)
Sequence:	EGKALNLTCTN VWGDPPPEVS WLKNEKALAS DDHCNLKFEA GRTAYFTING VSTADSGKYG LVVKNKYGSE TSDFTVSVFI PEEEARMAAL ESLKGGKKA
Characteristics:	Human MYOM1 partial ORF ( NP_003794.2, 1586 a.a. - 1684 a.a.) recombinant protein with GST-tag at N-terminal.
Purification:	in vitro wheat germ expression system

#### Target Details

Target:	Myomesin 1 (MYOM1)
Alternative Name:	MYOM1 ( <a href="#">MYOM1 Products</a> )

## Target Details

Background:	Full Gene Name: myomesin 1, 185 kDa Synonyms: MGC134946,MGC134947,SKELEMIN
Gene ID:	8736
NCBI Accession:	<a href="#">NM_003803</a>

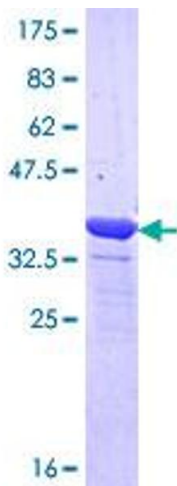
## Application Details

Application Notes:	Optimal working dilution should be determined by the investigator.
Comment:	Preparation method: in vitro, wheat germ expression system Product Quality tested by: 12.5% SDS-PAGE Stained with Coomassie Blue.
Restrictions:	For Research Use only

## Handling

Buffer:	50 mM Tris-HCl, 10 mM reduced Glutathione, pH =8.0 in the elution buffer.
Handling Advice:	Aliquot to avoid repeated freezing and thawing.
Storage:	-80 °C
Storage Comment:	Best use within three months from the date of receipt of this protein.

## Images



**Image 1.**