

[Go to Product page](#)

Datasheet for ABIN1311867

MYST1 Protein (AA 1-467) (GST tag)**1** Image

Overview

Quantity:	10 µg
Target:	MYST1 (KAT8)
Protein Characteristics:	AA 1-467
Origin:	Human
Source:	Wheat germ
Protein Type:	Recombinant
Purification tag / Conjugate:	This MYST1 protein is labelled with GST tag.
Application:	Western Blotting (WB), ELISA, Affinity Purification (AP), Antibody Array (AA)

Product Details

Purpose:	MYST1 (Human) Recombinant Protein (P01)
Sequence:	MAAQGAAAV AAGTSGVAGE GEPGPGENAA AEGTAPSPGR VSPPTPARGE PEVTVEIGET YLCRRPDSTW HSAEVIQSRV NDQEGREEFY VHYVGFNRRL DEWVDKNRLA LTKTVKDAVQ KNSEKYLSEL AEQPERKTR NQKRKHDEIN HVQKTYAEMD PTTAALEKEH EAITKVKYVD KIHIGNYEID AWYFSPFPED YGKQPKLWLC EYCLKYMKYE KSYRFHLGQC QWRQPPGKEI YRKSNISVYE VDGKDHKIYC QNLCLLAKLF LDHKTLYFDV EPFVFYILTE VDRQGAHIVG YFSKEKESPD GNNVACILTL PPYQRRGYGK FLIAFSYELS KLESTVGSPE KPLSDLGKLS YRSYWSWVLL EILRDFRGTL SIKDLSQMTS ITQNDIISTL QSLNMVKYWK GQHVICVTPK LVEEHLKSAQ YKKPPITGGW GAAVCRGRWG SVSMWTGRSQ GLLIAVT
Characteristics:	Human MYST1 full-length ORF (AAH37773.1, 1 a.a. - 467 a.a.) recombinant protein with GST-tag at N-terminal.

Product Details

Purification: in vitro wheat germ expression system

Target Details

Target: MYST1 (KAT8)

Alternative Name: MYST1 ([KAT8 Products](#))

Background: Full Gene Name: MYST histone acetyltransferase 1
Synonyms: FLJ14040,KAT8,MOF,hMOF

Gene ID: 84148

Application Details

Application Notes: Optimal working dilution should be determined by the investigator.

Comment: Preparation method: in vitro, wheat germ expression system
Product Quality tested by: 12.5% SDS-PAGE Stained with Coomassie Blue.

Restrictions: For Research Use only

Handling

Buffer: 50 mM Tris-HCl, 10 mM reduced Glutathione, pH =8.0 in the elution buffer.

Handling Advice: Aliquot to avoid repeated freezing and thawing.

Storage: -80 °C

Storage Comment: Best use within three months from the date of receipt of this protein.

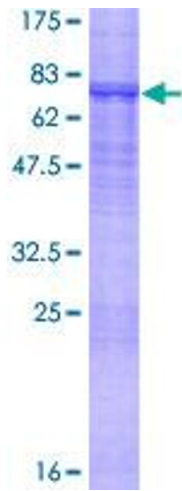


Image 1.