



Datasheet for ABIN1311882

MZF1 Protein (AA 419-518) (GST tag)[Go to Product page](#)

1 Image

Overview

Quantity:	10 µg
Target:	MZF1
Protein Characteristics:	AA 419-518
Origin:	Human
Source:	Wheat germ
Protein Type:	Recombinant
Purification tag / Conjugate:	This MZF1 protein is labelled with GST tag.
Application:	ELISA, Western Blotting (WB), Affinity Purification (AP), Antibody Array (AA)

Product Details

Purpose:	ZNF42 (Human) Recombinant Protein (Q01)
Sequence:	QGFVRSARLE EHRRVHTGEQ PFRCAECGQS FRQRSNLLQH QRIHGDPPGP GAKPPAPPGA PEPPGPFPCS ECRESFARRA VLLEHQAVHT GDKSFGCVEC
Characteristics:	Human ZNF42 partial ORF (NP_003413, 419 a.a. - 518 a.a.) recombinant protein with GST-tag at N-terminal.
Purification:	in vitro wheat germ expression system

Target Details

Target:	MZF1
Alternative Name:	MZF1 (MZF1 Products)

Target Details

Background:	Full Gene Name: myeloid zinc finger 1 Synonyms: MZF-1,MZF1B,ZNF42,ZSCAN6,Zfp98
Gene ID:	7593
NCBI Accession:	NM_003422

Application Details

Application Notes:	Optimal working dilution should be determined by the investigator.
Comment:	Preparation method: in vitro, wheat germ expression system Product Quality tested by: 12.5% SDS-PAGE Stained with Coomassie Blue.
Restrictions:	For Research Use only

Handling

Buffer:	50 mM Tris-HCl, 10 mM reduced Glutathione, pH =8.0 in the elution buffer.
Handling Advice:	Aliquot to avoid repeated freezing and thawing.
Storage:	-80 °C
Storage Comment:	Best use within three months from the date of receipt of this protein.

Images

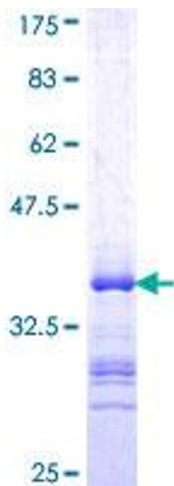


Image 1.