

Datasheet for ABIN1311884
GLYR1 Protein (AA 1-484) (GST tag)



[Go to Product page](#)

1 Image

Overview

Quantity:	25 µg
Target:	GLYR1
Protein Characteristics:	AA 1-484
Origin:	Human
Source:	Wheat germ
Protein Type:	Recombinant
Purification tag / Conjugate:	This GLYR1 protein is labelled with GST tag.
Application:	ELISA, Western Blotting (WB), Affinity Purification (AP), Antibody Array (AA)

Product Details

Purpose:	N-PAC (Human) Recombinant Protein (P01)
Sequence:	MIKINKGKRF QQAVDAVEEF LRRAKGKDQT SSHNSSDDKN RRNSSEERSR PNSGDEKRKL SLSEGKVKKN MGEKPKRVSS GSSERGSKSP LKRAQEQSPR KRGRPPKDEK DLTIPESSTV KGMMAGPMAA FKWQPTASEP VKDADPHFHH FLLSQTEKPA VCYQAITKKL KICEEETGSTV SIQAADSTAV NGSITPTDKK IGFLGLGLMG SGIVSNLLKM GHTVTVWNRT AEKCDLFIQE GARLGRTPAE VVSTCDITFA CVSDPKAAKD LVLGPSGVLQ GIRPGKCYVD MSTVDADTVT ELAQVIVSRG GRFLEAPVSG NQQLSNDGML VILAAGDRGL YEDCSCFQA MGKTSFFLGE VGNAAKMMLI VNMVQGSFMA TIAEGLTLAQ VTGQSQQTLL DILNQGQLAS IFLDQKCQNI LQGNFKPDFY LKYIQKDLRL AIALGDAVNH PTPMAAAANE VYKRAKALDQ SDNDMSAVYR AYIH
Characteristics:	Human N-PAC full-length ORF (AAH64940.1, 1 a.a. - 484 a.a.) recombinant protein with GST-tag at N-terminal.

Product Details

Purification: in vitro wheat germ expression system

Target Details

Target: GLYR1

Alternative Name: N-PAC ([GLYR1 Products](#))

Background: Full Gene Name: cytokine-like nuclear factor n-pac
Synonyms: BM045,HIBDL,NP60

Gene ID: 84656

Application Details

Application Notes: Optimal working dilution should be determined by the investigator.

Comment: Preparation method: in vitro, wheat germ expression system
Product Quality tested by: 12.5% SDS-PAGE Stained with Coomassie Blue.

Restrictions: For Research Use only

Handling

Buffer: 50 mM Tris-HCl, 10 mM reduced Glutathione, pH =8.0 in the elution buffer.

Handling Advice: Aliquot to avoid repeated freezing and thawing.

Storage: -80 °C

Storage Comment: Best use within three months from the date of receipt of this protein.

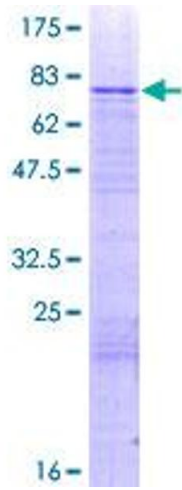


Image 1.