



[Go to Product page](#)

Datasheet for ABIN1311885

N4BP2 Protein (AA 1671-1770) (GST tag)

1 Image

Overview

Quantity:	10 µg
Target:	N4BP2
Protein Characteristics:	AA 1671-1770
Origin:	Human
Source:	Wheat germ
Protein Type:	Recombinant
Purification tag / Conjugate:	This N4BP2 protein is labelled with GST tag.
Application:	Affinity Purification (AP), Antibody Array (AA), ELISA, Western Blotting (WB)

Product Details

Purpose:	N4BP2 (Human) Recombinant Protein (Q01)
Sequence:	HLAAIEIFEK VNASLLPQNV LDLHGLHVDE ALEHLMRVLE KKTEEFKQNG GKPYLSVITG RGNHSQGGVA RIKPAVIKYL ISHSFRFSEI KPGCLKVMLK
Characteristics:	Human N4BP2 partial ORF (NP_060647, 1671 a.a. - 1770 a.a.) recombinant protein with GST-tag at N-terminal.
Purification:	in vitro wheat germ expression system

Target Details

Target:	N4BP2
Alternative Name:	N4BP2 (N4BP2 Products)

Target Details

Background: Full Gene Name: NEDD4 binding protein 2
Synonyms: B3BP,FLJ10680,KIAA1413

Gene ID: 55728

NCBI Accession: [NM_018177](#)

Application Details

Application Notes: Optimal working dilution should be determined by the investigator.

Comment: Preparation method: in vitro, wheat germ expression system
Product Quality tested by: 12.5% SDS-PAGE Stained with Coomassie Blue.

Restrictions: For Research Use only

Handling

Buffer: 50 mM Tris-HCl, 10 mM reduced Glutathione, pH =8.0 in the elution buffer.

Handling Advice: Aliquot to avoid repeated freezing and thawing.

Storage: -80 °C

Storage Comment: Best use within three months from the date of receipt of this protein.

Images

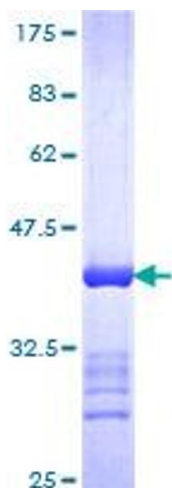


Image 1.