

Datasheet for ABIN1311889

N4BP2L2 Protein (AA 1-583) (GST tag)[Go to Product page](#)

1 Image

Overview

Quantity:	10 µg
Target:	N4BP2L2
Protein Characteristics:	AA 1-583
Origin:	Human
Source:	Wheat germ
Protein Type:	Recombinant
Purification tag / Conjugate:	This N4BP2L2 protein is labelled with GST tag.
Application:	ELISA, Western Blotting (WB), Affinity Purification (AP), Antibody Array (AA)

Product Details

Purpose:	PFAAP5 (Human) Recombinant Protein (P01)
Sequence:	MSYGEIEGKF LGPREEVTSE PRCKKCLKSTT ESYVFHNHNSN ADFHRIQEK T GNDWVPTII DVRGHSYLQE NKIKTTDLHR PLHDEMPG NR PDVIESIDSQ VLQEARPPLV SADDEIYSTS KAFIGPIYKP PEKKRNEGR NEAHVLNGIN DRGGQKEKQK FNSEKSEIDN ELFQFYKEIE ELEKEKDGFE NSCKESEPSQ EQFVPFYEGH NNGLLKPDEE KKDLSNKAMP SHCDYQQNLG NEPDKYPCNG QVIPTFCDTS FTSFRPEWQS VYPFIVPYGP PLPSLNYHLN IQRFSGPPNP PSNIFQAQDD SSIQNGYYVN NCHVNWNCMT FDQNN EYDC SENRSSVHPS GNGCSMQDRY VSNGFCEVRE RCWKDHCM MDK HNGTDRFVNQ QFQEEKLNKL QKLLILLRGL PGSGKTTLSR ILLGQNRDGI VFSTDDYFHH QDGYRYNVNQ LGDAHDWNQN RAKQAIDQGR SPVIIDNTNI QAWEMKPYVE VAIGKGYRVE FHEPETWWKF DPEELEKRNK HGVSRRKIAQ MLDRYEQMS ISIVMNSVEP SHKSTQRPPP PQGRQRWGGG LGSHNRVCVT NNH
Characteristics:	Human PFAAP5 full-length ORF (AAH10643.1, 1 a.a. - 583 a.a.) recombinant protein with GST-

Product Details

tag at N-terminal.

Purification: in vitro wheat germ expression system

Target Details

Target: N4BP2L2

Alternative Name: N4BP2L2 ([N4BP2L2 Products](#))

Background: Full Gene Name: NEDD4 binding protein 2-like 2
Synonyms: 92M18.3,CG005,FLJ36195,FLJ41089,FLJ43077,PFAAP5

Gene ID: 10443

Application Details

Application Notes: Optimal working dilution should be determined by the investigator.

Comment: Preparation method: in vitro, wheat germ expression system
Product Quality tested by: 12.5% SDS-PAGE Stained with Coomassie Blue.

Restrictions: For Research Use only

Handling

Buffer: 50 mM Tris-HCl, 10 mM reduced Glutathione, pH =8.0 in the elution buffer.

Handling Advice: Aliquot to avoid repeated freezing and thawing.

Storage: -80 °C

Storage Comment: Best use within three months from the date of receipt of this protein.

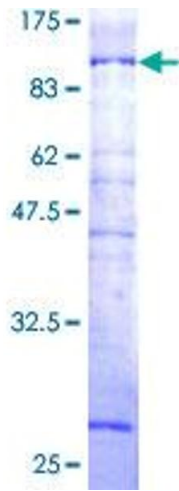


Image 1.