



[Go to Product page](#)

Datasheet for ABIN1311903

NAALAD2 Protein (AA 1-317) (GST tag)

1 Image

Overview

Quantity:	10 µg
Target:	NAALAD2
Protein Characteristics:	AA 1-317
Origin:	Human
Source:	Wheat germ
Protein Type:	Recombinant
Purification tag / Conjugate:	This NAALAD2 protein is labelled with GST tag.
Application:	ELISA, Western Blotting (WB), Affinity Purification (AP), Antibody Array (AA)

Product Details

Purpose:	NAALAD2 (Human) Recombinant Protein (P01)
Sequence:	MAESRGRLYL WMCLAAALAS FLMGFMVGWF IKPLKETTTS VRYHQSIRWK LVSEMKAENI KSFLRSFTKL PHLAGTEQNF LLAKKIQTQW KKFGLDSAKL VHYDVLLSYP NETNANYISI VDEHETEIFK TSYLEPPPDG YENVTNIVPP YNAFSAQGMP EGDLYVYNYA RTEDFFKLER EMGINCTGKI VIARYGKIFR GNKVKNAMLA GAIGIILYSD PADYFAPEVQ PYPKGWNLPG TAAQRGNVLN LNGAGDPLTP GYPAKEYTFR LDVEEGVGIP RIPVHPIGYN DAEILLRYSF LVGYEIKIFC TSCLFSH
Characteristics:	Human NAALAD2 full-length ORF (AAH38840, 1 a.a. - 317 a.a.) recombinant protein with GST-tag at N-terminal.
Purification:	in vitro wheat germ expression system

Target Details

Target:	NAALAD2
Alternative Name:	NAALAD2 (NAALAD2 Products)
Background:	Full Gene Name: N-acetylated alpha-linked acidic dipeptidase 2 Synonyms: MGC116996,MGC26353,NAADALASE2,NAALADASE2
Gene ID:	10003

Application Details

Application Notes:	Optimal working dilution should be determined by the investigator.
Comment:	Preparation method: in vitro, wheat germ expression system Product Quality tested by: 12.5% SDS-PAGE Stained with Coomassie Blue.
Restrictions:	For Research Use only

Handling

Buffer:	50 mM Tris-HCl, 10 mM reduced Glutathione, pH =8.0 in the elution buffer.
Handling Advice:	Aliquot to avoid repeated freezing and thawing.
Storage:	-80 °C
Storage Comment:	Best use within three months from the date of receipt of this protein.

Images

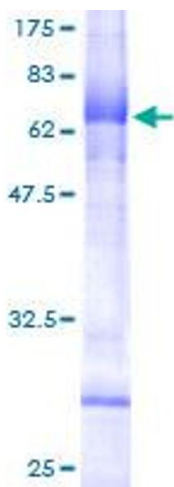


Image 1.