



[Go to Product page](#)

Datasheet for ABIN1311945

## NAIF1 Protein (AA 1-327) (GST tag)

### 1 Image

#### Overview

Quantity:	25 µg
Target:	NAIF1
Protein Characteristics:	AA 1-327
Origin:	Human
Source:	Wheat germ
Protein Type:	Recombinant
Purification tag / Conjugate:	This NAIF1 protein is labelled with GST tag.
Application:	ELISA, Western Blotting (WB), Affinity Purification (AP), Antibody Array (AA)

#### Product Details

Purpose:	C9orf90 (Human) Recombinant Protein (P01)
Sequence:	MAVPAKKRKM NFSEREVEII VEELELKKHL LVNHFNAGVP LAAKSAAWHG ILRRVNAVAT CRRELPEVKK KWSDLKTEVR RKVAQVRAAV EGGEAPGPTE EDGAGGPGTG GGSGGGGPAV APVLLTPMQQ RICNLLGEAT IISLPSTTEI HPVALGPSAT AAAATVTLTQ IPTETTYHTL EEGVVEYCTA EAPPPLPET PVDMMMAQHAD TSVKQPALKS RIALNSAKLI QEQRVTNLHV KEIAQHLEQQ NDLLQMIRRS QEVQACAQER QAQAMEGTQA ALSVLIQVLR PMIKDFRRYL QSNTANPAPA SDPGQVAQNG QPDSIIQ
Characteristics:	Human C9orf90 full-length ORF ( NP_931045.1, 1 a.a. - 327 a.a.) recombinant protein with GST-tag at N-terminal.
Purification:	in vitro wheat germ expression system

## Target Details

Target:	NAIF1
Alternative Name:	NAIF1 ( <a href="#">NAIF1 Products</a> )
Background:	Full Gene Name: nuclear apoptosis inducing factor 1 Synonyms: C9orf90,DKFZp762G199,RP11-379C10.2,bA379C10.2
Gene ID:	203245
NCBI Accession:	<a href="#">NM_197956</a>

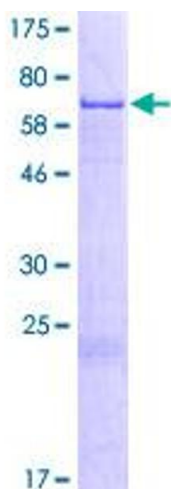
## Application Details

Application Notes:	Optimal working dilution should be determined by the investigator.
Comment:	Preparation method: in vitro, wheat germ expression system Product Quality tested by: 12.5% SDS-PAGE Stained with Coomassie Blue.
Restrictions:	For Research Use only

## Handling

Buffer:	50 mM Tris-HCl, 10 mM reduced Glutathione, pH =8.0 in the elution buffer.
Handling Advice:	Aliquot to avoid repeated freezing and thawing.
Storage:	-80 °C
Storage Comment:	Best use within three months from the date of receipt of this protein.

## Images



**Image 1.**