

Datasheet for ABIN1311965  
**NAP1L2 Protein (AA 1-460) (GST tag)**



[Go to Product page](#)

1 Image

## Overview

Quantity:	10 µg
Target:	NAP1L2
Protein Characteristics:	AA 1-460
Origin:	Human
Source:	Wheat germ
Protein Type:	Recombinant
Purification tag / Conjugate:	This NAP1L2 protein is labelled with GST tag.
Application:	ELISA, Western Blotting (WB), Affinity Purification (AP), Antibody Array (AA)

## Product Details

Purpose:	NAP1L2 (Human) Recombinant Protein (P01)
Sequence:	MAKSEN RKEL SESSQEEAGN QIMVEGLGEH LERGEDAAAG LGDDGKCGEE AAAGLGEEGE NGEDTAAGSG EDGKKGGDTD EDSEADRPKG LIGYVLDTDF VESLPVKVKY RVLALKKLQT RAANLESKFL REFHDIERKF AEMYQPLEK RRQIINAIYE PTEEECEYKS DSEDCDDEEM CHEEMYGNEE GMVHEYVDED DGYEDYYDY AVEEEEEEEE EDDIEATGEE NKEEEDPKGI PDFWLTVLKN VDTLTPLIKK YDEPILKLLT DIKVKLSDPG EPLSFTLEFH FKPNEYFKNE LLTKTYVLKS KLAYDPPHY RGTAEYSTG CEIDWNEGKN VTLKTIKKKQ KHRIWGTIRT VTEDFPKDSF FNFFSPHGIT SNGRDGNDDF LLGHNLRTYI IPRSVLFFSG DALESQQEGV VREVNDAIYD KIIYDNWMAA IEEVKACCKN LEALVEDIDR
Characteristics:	Human NAP1L2 full-length ORF ( AAH26325, 1 a.a. - 460 a.a.) recombinant protein with GST-tag at N-terminal.

## Product Details

---

Purification: in vitro wheat germ expression system

## Target Details

---

Target: NAP1L2

Alternative Name: NAP1L2 ([NAP1L2 Products](#))

Background: Full Gene Name: nucleosome assembly protein 1-like 2  
Synonyms: BPX,MGC26243

Gene ID: 4674

## Application Details

---

Application Notes: Optimal working dilution should be determined by the investigator.

Comment: Preparation method: in vitro, wheat germ expression system  
Product Quality tested by: 12.5% SDS-PAGE Stained with Coomassie Blue.

Restrictions: For Research Use only

## Handling

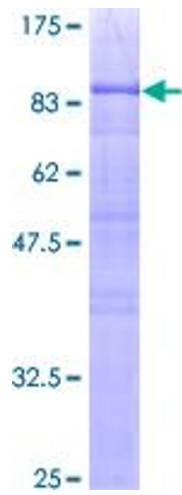
---

Buffer: 50 mM Tris-HCl, 10 mM reduced Glutathione, pH =8.0 in the elution buffer.

Handling Advice: Aliquot to avoid repeated freezing and thawing.

Storage: -80 °C

Storage Comment: Best use within three months from the date of receipt of this protein.



**Image 1.**