



[Go to Product page](#)

Datasheet for ABIN1312004
NAA40 Protein (AA 1-237) (GST tag)

1 Image

Overview

Quantity:	10 µg
Target:	NAA40
Protein Characteristics:	AA 1-237
Origin:	Human
Source:	Wheat germ
Protein Type:	Recombinant
Purification tag / Conjugate:	This NAA40 protein is labelled with GST tag.
Application:	ELISA, Western Blotting (WB), Affinity Purification (AP), Antibody Array (AA)

Product Details

Purpose:	NAT11 (Human) Recombinant Protein (P01)
Sequence:	MGRKSSKAKE KKQKRLEERA AMDAVCAKVD AANRLGDPLE AFPVFKKYDR NGLNVSIECK RVSGLEPATV DWAFDLTKTN MQTMYEQSEW GWKDREKREE MTDDRAWYLI AWENSSVPVA FSHFRFDVEC GDEVLYCYEV QLESKVRKRG LGKFLIQILQ LMANSTQMKK VMLTVFKHNNH GAYQFFREAL QFEIDDSSPS MSGCCGEDCS YEILSRRTKF GDSHSHSHAGG HCGGCCH
Characteristics:	Human NAT11 full-length ORF (AAH52298.1, 1 a.a. - 237 a.a.) recombinant protein with GST-tag at N-terminal.
Purification:	in vitro wheat germ expression system

Target Details

Target:	NAA40
---------	-------

Target Details

Alternative Name:	NAT11 (NAA40 Products)
Background:	Full Gene Name: N-acetyltransferase 11 (GCN5-related, putative) Synonyms: FLJ13848
Gene ID:	79829

Application Details

Application Notes:	Optimal working dilution should be determined by the investigator.
Comment:	Preparation method: in vitro, wheat germ expression system Product Quality tested by: 12.5% SDS-PAGE Stained with Coomassie Blue.
Restrictions:	For Research Use only

Handling

Buffer:	50 mM Tris-HCl, 10 mM reduced Glutathione, pH =8.0 in the elution buffer.
Handling Advice:	Aliquot to avoid repeated freezing and thawing.
Storage:	-80 °C
Storage Comment:	Best use within three months from the date of receipt of this protein.

Images

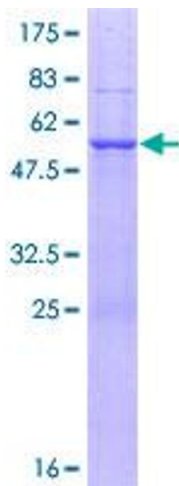


Image 1.