



[Go to Product page](#)

Datasheet for ABIN1312013
NAT2 Protein (AA 1-290) (GST tag)

1 Image

Overview

Quantity:	10 µg
Target:	NAT2
Protein Characteristics:	AA 1-290
Origin:	Human
Source:	Wheat germ
Protein Type:	Recombinant
Purification tag / Conjugate:	This NAT2 protein is labelled with GST tag.
Application:	Western Blotting (WB), ELISA, Affinity Purification (AP), Antibody Array (AA)

Product Details

Purpose:	NAT2 (Human) Recombinant Protein (P01)
Sequence:	MDIEAYFERI GYKNSRNKLD LETLTDILEH QIRAVPFENL NMHCGQAMEL GLEAIFDHIV RRNRGGWCLQ VNQLLYWALT TIGFQTTMLG GYFYIPPVVK YSTGMVHLLL QVTIDGRNYI VDAGSGSSSQ MWQPLELISG KDQPQVPCIF CLTEERGIWY LDQIRREQYI TNKEFLNSHL LPKKKHQKIY LFTLEPQTIE DFESMNTYLQ TSPTSSFITT SFCSLQTPEG VYCLVGFILT YRKFNYKDNT DLVEFKLTE EEVEEVKNI FKISLGRNLV PKPGDGSLLTI
Characteristics:	Human NAT2 full-length ORF (AAH15878.1, 1 a.a. - 290 a.a.) recombinant protein with GST-tag at N-terminal.
Purification:	in vitro wheat germ expression system

Target Details

Target:	NAT2
Alternative Name:	NAT2 (NAT2 Products)
Background:	Full Gene Name: N-acetyltransferase 2 (arylamine N-acetyltransferase) Synonyms: AAC2,PNAT
Gene ID:	10

Application Details

Application Notes:	Optimal working dilution should be determined by the investigator.
Comment:	Preparation method: in vitro, wheat germ expression system Product Quality tested by: 12.5% SDS-PAGE Stained with Coomassie Blue.
Restrictions:	For Research Use only

Handling

Buffer:	50 mM Tris-HCl, 10 mM reduced Glutathione, pH =8.0 in the elution buffer.
Handling Advice:	Aliquot to avoid repeated freezing and thawing.
Storage:	-80 °C
Storage Comment:	Best use within three months from the date of receipt of this protein.

Images

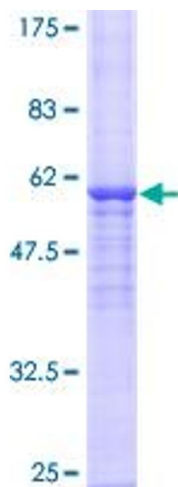


Image 1.