



[Go to Product page](#)

Datasheet for ABIN1312026

NAT8B Protein (AA 83-179) (GST tag)

1 Image

Overview

Quantity:	10 µg
Target:	NAT8B
Protein Characteristics:	AA 83-179
Origin:	Human
Source:	Wheat germ
Protein Type:	Recombinant
Purification tag / Conjugate:	This NAT8B protein is labelled with GST tag.
Application:	ELISA, Western Blotting (WB), Affinity Purification (AP), Antibody Array (AA)

Product Details

Purpose:	CML2 (Human) Recombinant Protein (Q01)
Sequence:	TRYVDIALRT DMSDITKSYL SECGSCFWVG ESEEKVVGTV GALPVDDPTL REKRLQLFHL SVDNEHRGQG IAKALVRTVL QFARDQGYSE VVLDTSN
Characteristics:	Human CML2 partial ORF (NP_057431.1, 83 a.a. - 179 a.a.) recombinant protein with GST-tag at N-terminal.
Purification:	in vitro wheat germ expression system

Target Details

Target:	NAT8B
Alternative Name:	NAT8B (NAT8B Products)

Target Details

Background:	Full Gene Name: N-acetyltransferase 8B (GCN5-related, putative, gene/pseudogene) Synonyms: CML2,Hcm12,MGC97061,NAT8BP
Gene ID:	51471
NCBI Accession:	NM_016347

Application Details

Application Notes:	Optimal working dilution should be determined by the investigator.
Comment:	Preparation method: in vitro, wheat germ expression system Product Quality tested by: 12.5% SDS-PAGE Stained with Coomassie Blue.
Restrictions:	For Research Use only

Handling

Buffer:	50 mM Tris-HCl, 10 mM reduced Glutathione, pH =8.0 in the elution buffer.
Handling Advice:	Aliquot to avoid repeated freezing and thawing.
Storage:	-80 °C
Storage Comment:	Best use within three months from the date of receipt of this protein.

Images

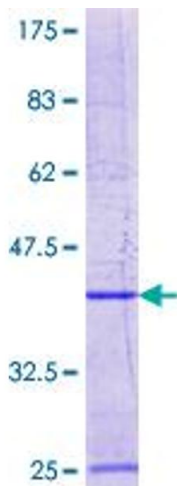


Image 1.