



[Go to Product page](#)

Datasheet for ABIN1312029

## NAT8L Protein (AA 1-134) (GST tag)

### 1 Image

#### Overview

Quantity:	2 µg
Target:	NAT8L
Protein Characteristics:	AA 1-134
Origin:	Human
Source:	Wheat germ
Protein Type:	Recombinant
Purification tag / Conjugate:	This NAT8L protein is labelled with GST tag.
Application:	Western Blotting (WB), ELISA, Affinity Purification (AP), Antibody Array (AA)

#### Product Details

Purpose:	FLJ37478 (Human) Recombinant Protein (P01)
Sequence:	MADIEQYYMK PPGSCFWVAV LDGNVVGIVA ARAHEEDNTV ELLRMSVDSR FRGKGIKAL GRKVFLEFAVV HNYSAVVLGT TAVKVAHKL YESLGFRHMG ASDHYVLPGM TSLAERLFF QVRYHRYRLQ LREE
Characteristics:	Human FLJ37478 full-length ORF ( NP_848652.1, 1 a.a. - 134 a.a.) recombinant protein with GST-tag at N-terminal.
Purification:	in vitro wheat germ expression system

#### Target Details

Target:	NAT8L
Alternative Name:	NAT8L ( <a href="#">NAT8L Products</a> )

## Target Details

Background:	Full Gene Name: N-acetyltransferase 8-like (GCN5-related, putative) Synonyms: CML3,FLJ37478,Hcml3,MGC117272,NAT8-LIKE
Gene ID:	339983
NCBI Accession:	<a href="#">NM_178557</a>

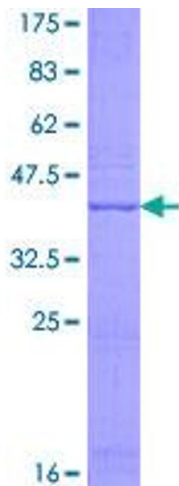
## Application Details

Application Notes:	Optimal working dilution should be determined by the investigator.
Comment:	Preparation method: in vitro, wheat germ expression system Product Quality tested by: 12.5% SDS-PAGE Stained with Coomassie Blue.
Restrictions:	For Research Use only

## Handling

Buffer:	50 mM Tris-HCl, 10 mM reduced Glutathione, pH =8.0 in the elution buffer.
Handling Advice:	Aliquot to avoid repeated freezing and thawing.
Storage:	-80 °C
Storage Comment:	Best use within three months from the date of receipt of this protein.

## Images



**Image 1.**