



[Go to Product page](#)

Datasheet for ABIN1312032
NAV1 Protein (AA 1-559) (GST tag)

1 Image

Overview

Quantity:	10 µg
Target:	NAV1
Protein Characteristics:	AA 1-559
Origin:	Human
Source:	Wheat germ
Protein Type:	Recombinant
Purification tag / Conjugate:	This NAV1 protein is labelled with GST tag.
Application:	ELISA, Western Blotting (WB), Affinity Purification (AP), Antibody Array (AA)

Product Details

Purpose:	NAV1 (Human) Recombinant Protein (P01)
Sequence:	MKLTDIRLEA LNSAHQLDQL RETMHNMQLE VDLLKAENDR LKVAPGPSSG STPGQVPGSS ALSSPRRSLG LALTHSFGPS LADTDLSPMD GISTCGPKEE VTLRVVVRMP PQHIIKGD LQEQEFLGCSK VSGKVDWKML DEAVFQVFKD YISKMDPAST LGLSTESIHG YSISHVKRVL DAEPPPEMPPC RRGVNNISVS LKGLKEKCVD SLVFETLIPK PMMQHYISLL LKHRRLLVLSG PSGTGKTYLT NRLAEYLVER SGREVTGIV STFNMHQQSC KDLQLYLSNL ANQIDRETGI GDVPLVILLD DLSEAGSISE LVNGALTCKY HKCPYIIGTT NQPVKMTPNH GLHLSFRMLT FSNNVEPANG FLVRYLRRLK VESDSDINAN KEELLRVLWD VPKLWYHLHT FLEKHSTSD LIGPCFFLSC PIGIEDFRTW FIDLWNNISII PYLQEGAKDG IKVHGQKAAW EDPVEVVRDT LPWPSAQQDQ SKLYHLPPPT VGPHSIASPP EDRTVKDSTP SSLDSDPLMA MLLKLQEAAN YIESPDRETI LDPNLQATL
Characteristics:	Human NAV1 full-length ORF (AAH07523.1, 1 a.a. - 559 a.a.) recombinant protein with GST-tag

Product Details

at N-terminal.

Purification: in vitro wheat germ expression system

Target Details

Target: NAV1

Alternative Name: NAV1 ([NAV1 Products](#))

Background: Full Gene Name: neuron navigator 1
Synonyms: DKFZp781D0314,FLJ12560,FLJ14203,KIAA1151,MGC14961,POMFIL3,steerin-1

Gene ID: 89796

Application Details

Application Notes: Optimal working dilution should be determined by the investigator.

Comment: Preparation method: in vitro, wheat germ expression system
Product Quality tested by: 12.5% SDS-PAGE Stained with Coomassie Blue.

Restrictions: For Research Use only

Handling

Buffer: 50 mM Tris-HCl, 10 mM reduced Glutathione, pH =8.0 in the elution buffer.

Handling Advice: Aliquot to avoid repeated freezing and thawing.

Storage: -80 °C

Storage Comment: Best use within three months from the date of receipt of this protein.

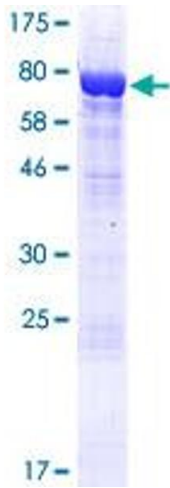


Image 1.