

Datasheet for ABIN1312065
NCAPD2 Protein (AA 1240-1339) (GST tag)



[Go to Product page](#)

1 Image

Overview

Quantity:	10 µg
Target:	NCAPD2
Protein Characteristics:	AA 1240-1339
Origin:	Human
Source:	Wheat germ
Protein Type:	Recombinant
Purification tag / Conjugate:	This NCAPD2 protein is labelled with GST tag.
Application:	ELISA, Western Blotting (WB), Affinity Purification (AP), Antibody Array (AA)

Product Details

Purpose:	CNAP1 (Human) Recombinant Protein (Q01)
Sequence:	LRKMLDNFDC FGDKLSDESI FSAFLSVVGK LRRGAKPEGK AIIDEFEQKL RACHTRGLDG IKELEIGQAG SQRAPSAKKP SSGSRYQPLA STASDNDFVT
Characteristics:	Human CNAP1 partial ORF (AAH28182, 1240 a.a. - 1339 a.a.) recombinant protein with GST-tag at N-terminal.
Purification:	in vitro wheat germ expression system

Target Details

Target:	NCAPD2
Alternative Name:	NCAPD2 (NCAPD2 Products)

Target Details

Background: Full Gene Name: non-SMC condensin I complex, subunit D2
Synonyms: CAP-D2,CNAP1,KIAA0159,hCAP-D2

Gene ID: 9918

Application Details

Application Notes: Optimal working dilution should be determined by the investigator.

Comment: Preparation method: in vitro, wheat germ expression system
Product Quality tested by: 12.5% SDS-PAGE Stained with Coomassie Blue.

Restrictions: For Research Use only

Handling

Buffer: 50 mM Tris-HCl, 10 mM reduced Glutathione, pH =8.0 in the elution buffer.

Handling Advice: Aliquot to avoid repeated freezing and thawing.

Storage: -80 °C

Storage Comment: Best use within three months from the date of receipt of this protein.

Images

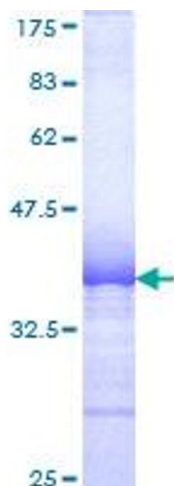


Image 1.