

Datasheet for ABIN1312082  
**NCBP1 Protein (AA 2-99) (GST tag)**



[Go to Product page](#)

1 Image

Overview

Quantity:	10 µg
Target:	NCBP1
Protein Characteristics:	AA 2-99
Origin:	Human
Source:	Wheat germ
Protein Type:	Recombinant
Purification tag / Conjugate:	This NCBP1 protein is labelled with GST tag.
Application:	ELISA, Western Blotting (WB), Affinity Purification (AP), Antibody Array (AA)

Product Details

Purpose:	NCBP1 (Human) Recombinant Protein (Q01)
Sequence:	SRRRHSDEND GGQPHKRRKT SDANETEDHL ESLICKVGEK SACSLESNLE GLAGVLEADL PNYKSKILRL LCTVARLLPE KLTITYTTLVG LLNARNYN
Characteristics:	Human NCBP1 partial ORF ( NP_002477, 2 a.a. - 99 a.a.) recombinant protein with GST-tag at N-terminal.
Purification:	in vitro wheat germ expression system

Target Details

Target:	NCBP1
Alternative Name:	NCBP1 ( <a href="#">NCBP1 Products</a> )

## Target Details

Background:	Full Gene Name: nuclear cap binding protein subunit 1, 80 kDa Synonyms: CBP80,MGC2087,NCBP
Gene ID:	4686
NCBI Accession:	<a href="#">NM_002486</a>
Pathways:	<a href="#">Ribonucleoprotein Complex Subunit Organization</a> , <a href="#">Photoperiodism</a> , <a href="#">Methionine Biosynthetic Process</a>

## Application Details

Application Notes:	Optimal working dilution should be determined by the investigator.
Comment:	Preparation method: in vitro, wheat germ expression system Product Quality tested by: 12.5% SDS-PAGE Stained with Coomassie Blue.
Restrictions:	For Research Use only

## Handling

Buffer:	50 mM Tris-HCl, 10 mM reduced Glutathione, pH =8.0 in the elution buffer.
Handling Advice:	Aliquot to avoid repeated freezing and thawing.
Storage:	-80 °C
Storage Comment:	Best use within three months from the date of receipt of this protein.

## Images

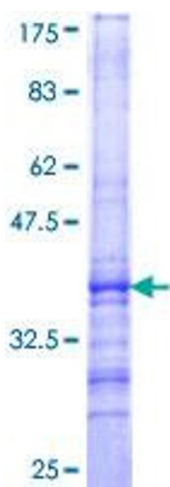


Image 1.