



[Go to Product page](#)

Datasheet for ABIN1312088

## NCCRP1 Protein (AA 1-275) (GST tag)

### 1 Image

#### Overview

Quantity:	10 µg
Target:	NCCRP1
Protein Characteristics:	AA 1-275
Origin:	Human
Source:	Wheat germ
Protein Type:	Recombinant
Purification tag / Conjugate:	This NCCRP1 protein is labelled with GST tag.
Application:	ELISA, Western Blotting (WB), Affinity Purification (AP), Antibody Array (AA)

#### Product Details

Purpose:	LOC342897 (Human) Recombinant Protein (P01)
Sequence:	MEEVREGHAL GGGMEADGPA SLQELPPSPR SPSPPPSPPP LPSPPSLPSP AAPEAPELPE PAQPSEAHAR QLLLEEWGPL SGGLELPQRL TWKLLLLRRP LYRNLLRSPN PEGINIYEPA PPTGPTQRPL ETLGNFRGWY IRTEKLQQNQ SWTVKQQCVD LLAEGLWEEL LDDEQPAITV MDWFEDSRDL ACVYELHVWL LAADRRTVIA QHHVAPRTSG RGPPGRWVQV SHVFRHYGPG VRFIHLHKA KNRMEPGGLR RTRVTDSSVS VQLRE
Characteristics:	Human LOC342897 full-length ORF ( NP_001001414.1, 1 a.a. - 275 a.a.) recombinant protein with GST-tag at N-terminal.
Purification:	in vitro wheat germ expression system

## Target Details

Target:	NCCRP1
Alternative Name:	NCCRP1 ( <a href="#">NCCRP1 Products</a> )
Background:	Full Gene Name: non-specific cytotoxic cell receptor protein 1 homolog (zebrafish) Synonyms: NCCRP-1
Gene ID:	342897
NCBI Accession:	<a href="#">NM_001001414</a>

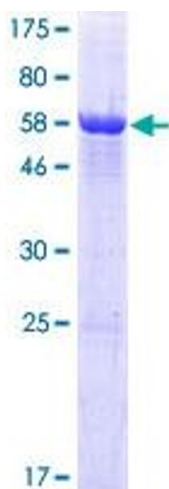
## Application Details

Application Notes:	Optimal working dilution should be determined by the investigator.
Comment:	Preparation method: in vitro, wheat germ expression system Product Quality tested by: 12.5% SDS-PAGE Stained with Coomassie Blue.
Restrictions:	For Research Use only

## Handling

Buffer:	50 mM Tris-HCl, 10 mM reduced Glutathione, pH =8.0 in the elution buffer.
Handling Advice:	Aliquot to avoid repeated freezing and thawing.
Storage:	-80 °C
Storage Comment:	Best use within three months from the date of receipt of this protein.

## Images



**Image 1.**