

Datasheet for ABIN1312160

NDC80 Protein (AA 545-642) (GST tag)



[Go to Product page](#)

1 Image

Overview

Quantity:	10 µg
Target:	NDC80
Protein Characteristics:	AA 545-642
Origin:	Human
Source:	Wheat germ
Protein Type:	Recombinant
Purification tag / Conjugate:	This NDC80 protein is labelled with GST tag.
Application:	ELISA, Western Blotting (WB), Affinity Purification (AP), Antibody Array (AA)

Product Details

Purpose:	KNTC2 (Human) Recombinant Protein (Q01)
Sequence:	TVNQGLSEAM NELDAVQREY QLVVQTTTEE RRVKVGNNLQR LLEMVATHVG SVEKHL EEQI AKVDREYE EC MSED LSENIK EIRD KYEKKA TLIKSSEE
Characteristics:	Human KNTC2 partial ORF (AAH35617, 545 a.a. - 642 a.a.) recombinant protein with GST-tag at N-terminal.
Purification:	in vitro wheat germ expression system

Target Details

Target:	NDC80
Alternative Name:	NDC80 (NDC80 Products)

Target Details

Background:	Gene: NDC80 homolog, kinetochore complex component (<i>S. cerevisiae</i>) Synonyms: HEC, HEC1, KNTC2, TID3, hsNDC80
Gene ID:	10403
Pathways:	Maintenance of Protein Location

Application Details

Application Notes:	Optimal working dilution should be determined by the investigator.
Restrictions:	For Research Use only

Handling

Buffer:	50 mM Tris-HCl, 10 mM reduced Glutathione, pH =8.0 in the elution buffer.
Handling Advice:	Aliquot to avoid repeated freezing and thawing.
Storage:	-80 °C
Storage Comment:	Best use within three months from the date of receipt of this protein.

Images

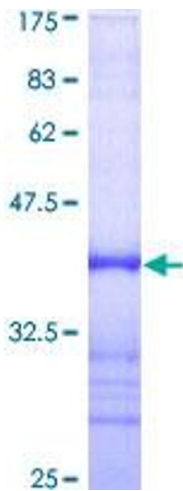


Image 1.