



[Go to Product page](#)

Datasheet for ABIN1312225  
**NDUFA5 Protein (AA 1-116) (GST tag)**

1 Image

Overview

Quantity:	10 µg
Target:	NDUFA5
Protein Characteristics:	AA 1-116
Origin:	Human
Source:	Wheat germ
Protein Type:	Recombinant
Purification tag / Conjugate:	This NDUFA5 protein is labelled with GST tag.
Application:	ELISA, Western Blotting (WB), Affinity Purification (AP), Antibody Array (AA)

Product Details

Purpose:	NDUFA5 (Human) Recombinant Protein (P01)
Sequence:	MAGVLKKTG LVGLAVCNTP HERLRILYTK ILDVLEEIPK NAAAYRKYTEQ ITNEKLAMVK AEPDVKKLED QLQGGQLEEV ILQAEHELNL ARKMREWKLW EPLVEEPPAD QWKWPI
Characteristics:	Human NDUFA5 full-length ORF ( NP_004991.1, 1 a.a. - 116 a.a.) recombinant protein with GST-tag at N-terminal.
Purification:	in vitro wheat germ expression system

Target Details

Target:	NDUFA5
Alternative Name:	NDUFA5 ( <a href="#">NDUFA5 Products</a> )

## Target Details

Background:	Full Gene Name: NADH dehydrogenase (ubiquinone) 1 alpha subcomplex, 5, 13 kDa Synonyms: B13,CI-13KD-B,DKFZp781K1356,FLJ12147,NUFM,UQOR13
Gene ID:	4698
NCBI Accession:	<a href="#">NM_005000</a>

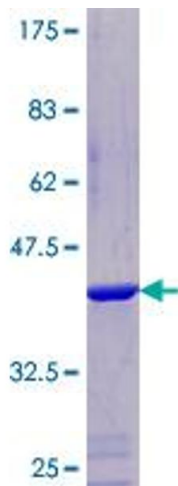
## Application Details

Application Notes:	Optimal working dilution should be determined by the investigator.
Comment:	Preparation method: in vitro, wheat germ expression system Product Quality tested by: 12.5% SDS-PAGE Stained with Coomassie Blue.
Restrictions:	For Research Use only

## Handling

Buffer:	50 mM Tris-HCl, 10 mM reduced Glutathione, pH =8.0 in the elution buffer.
Handling Advice:	Aliquot to avoid repeated freezing and thawing.
Storage:	-80 °C
Storage Comment:	Best use within three months from the date of receipt of this protein.

## Images



**Image 1.**