

Datasheet for ABIN1312245
NDUFB10 Protein (AA 1-172) (GST tag)



[Go to Product page](#)

1 Image

Overview

Quantity:	25 µg
Target:	NDUFB10
Protein Characteristics:	AA 1-172
Origin:	Human
Source:	Wheat germ
Protein Type:	Recombinant
Purification tag / Conjugate:	This NDUFB10 protein is labelled with GST tag.
Application:	ELISA, Western Blotting (WB), Affinity Purification (AP), Antibody Array (AA)

Product Details

Purpose:	NDUFB10 (Human) Recombinant Protein (P01)
Sequence:	MPDSWDKDVY PEP RRTPVQ PNP IYMMKA FDLIVDRPVT LVREFIERQH AKNRYYYHR QYRRVPDITE CK EEDIMCMY EAEMQWKRDY KVDQEINIM QDRLKACQQR EGQNYQQNCI KEVEQFTQVA KAYQDRYQDL GAYSSARKCL AKQRQ RMLQE RKA AKEAAAA TS
Characteristics:	Human NDUFB10 full-length ORF (NP_004539.1, 1 a.a. - 172 a.a.) recombinant protein with GST-tag at N-terminal.
Purification:	in vitro wheat germ expression system

Target Details

Target:	NDUFB10
Alternative Name:	NDUFB10 (NDUFB10 Products)

Target Details

Background:	Full Gene Name: NADH dehydrogenase (ubiquinone) 1 beta subcomplex, 10, 22 kDa Synonyms: PDSW
Gene ID:	4716
NCBI Accession:	NM_004548

Application Details

Application Notes:	Optimal working dilution should be determined by the investigator.
Comment:	Preparation method: in vitro, wheat germ expression system Product Quality tested by: 12.5% SDS-PAGE Stained with Coomassie Blue.
Restrictions:	For Research Use only

Handling

Buffer:	50 mM Tris-HCl, 10 mM reduced Glutathione, pH =8.0 in the elution buffer.
Handling Advice:	Aliquot to avoid repeated freezing and thawing.
Storage:	-80 °C
Storage Comment:	Best use within three months from the date of receipt of this protein.

Images

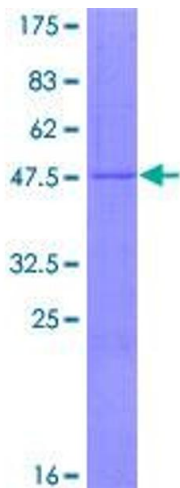


Image 1.