



[Go to Product page](#)

Datasheet for ABIN1312257

NDUFB5 Protein (AA 1-189) (GST tag)

1 Image

Overview

Quantity:	10 µg
Target:	NDUFB5
Protein Characteristics:	AA 1-189
Origin:	Human
Source:	Wheat germ
Protein Type:	Recombinant
Purification tag / Conjugate:	This NDUFB5 protein is labelled with GST tag.
Application:	ELISA, Western Blotting (WB), Affinity Purification (AP), Antibody Array (AA)

Product Details

Purpose:	NDUFB5 (Human) Recombinant Protein (P01)
Sequence:	MAAMSLRRV SVTAVAALSG RPLGTRLGFG GFLTRGFKA AAPVRHSGDH GKRLFVIRPS RFYDRRFLKL LRFYIALTGI PVAIFITLVN VFIGQAELAE IPEGYVPEHW EYYKHPISRW IARNFYDSPE KIYERTMAVL QIEAEKAE LR VKELEVRKLM HVRGDGPWYY YETIDKELID HSPKATPDN
Characteristics:	Human NDUFB5 full-length ORF (NP_002483.1, 1 a.a. - 189 a.a.) recombinant protein with GST-tag at N-terminal.
Purification:	in vitro wheat germ expression system

Target Details

Target:	NDUFB5
---------	--------

Target Details

Alternative Name:	NDUFB5 (NDUFB5 Products)
Background:	Full Gene Name: NADH dehydrogenase (ubiquinone) 1 beta subcomplex, 5, 16 kDa Synonyms: CI-SGDH,DKFZp686N02262,FLJ30597,MGC111204,MGC12314,SGDH
Gene ID:	4711
NCBI Accession:	NM_002492

Application Details

Application Notes:	Optimal working dilution should be determined by the investigator.
Comment:	Preparation method: in vitro, wheat germ expression system Product Quality tested by: 12.5% SDS-PAGE Stained with Coomassie Blue.
Restrictions:	For Research Use only

Handling

Buffer:	50 mM Tris-HCl, 10 mM reduced Glutathione, pH =8.0 in the elution buffer.
Handling Advice:	Aliquot to avoid repeated freezing and thawing.
Storage:	-80 °C
Storage Comment:	Best use within three months from the date of receipt of this protein.

Images

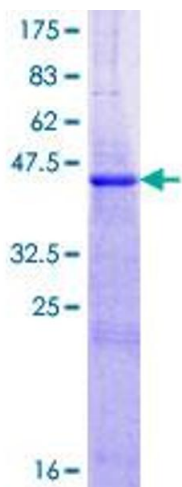


Image 1.