



[Go to Product page](#)

Datasheet for ABIN1312308

Nebulin Protein (NEB) (AA 2108-2217) (GST tag)

1 Image

Overview

Quantity:	10 µg
Target:	Nebulin (NEB)
Protein Characteristics:	AA 2108-2217
Origin:	Human
Source:	Wheat germ
Protein Type:	Recombinant
Purification tag / Conjugate:	This Nebulin protein is labelled with GST tag.
Application:	Affinity Purification (AP), Antibody Array (AA), ELISA, Western Blotting (WB)

Product Details

Purpose:	NEB (Human) Recombinant Protein (Q01)
Sequence:	NTKTSYHTPA DMLSVTAAKD AQANITNTNY KHLIHKYILL PDAMNIELTR NMNRIQSDNE YKQDYNEWYK GLGWSPAGSL EVEKAKKATE YASDQKYRQH PSNFQFKKLT
Characteristics:	Human NEB partial ORF (NP_004534, 2108 a.a. - 2217 a.a.) recombinant protein with GST-tag at N-terminal.
Purification:	in vitro wheat germ expression system

Target Details

Target:	Nebulin (NEB)
Alternative Name:	NEB (NEB Products)

Target Details

Target Type:	Chemical
Background:	Full Gene Name: nebulin Synonyms: DKFZp686C1456,FLJ11505,FLJ36536,FLJ39568,FLJ39584,NEB177D,NEM2
Gene ID:	4703
NCBI Accession:	NM_004543

Application Details

Application Notes:	Optimal working dilution should be determined by the investigator.
Comment:	Preparation method: in vitro, wheat germ expression system Product Quality tested by: 12.5% SDS-PAGE Stained with Coomassie Blue.
Restrictions:	For Research Use only

Handling

Buffer:	50 mM Tris-HCl, 10 mM reduced Glutathione, pH =8.0 in the elution buffer.
Handling Advice:	Aliquot to avoid repeated freezing and thawing.
Storage:	-80 °C
Storage Comment:	Best use within three months from the date of receipt of this protein.

Images

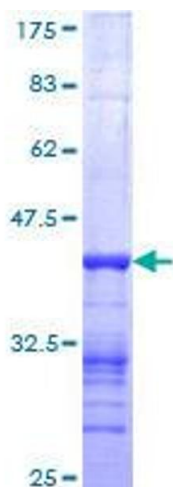


Image 1.