

Datasheet for ABIN1312320

NEDD4 Protein (AA 791-900) (GST tag)[Go to Product page](#)

1 Image

Overview

Quantity:	10 µg
Target:	NEDD4
Protein Characteristics:	AA 791-900
Origin:	Human
Source:	Wheat germ
Protein Type:	Recombinant
Purification tag / Conjugate:	This NEDD4 protein is labelled with GST tag.
Application:	Western Blotting (WB), ELISA, Affinity Purification (AP), Antibody Array (AA)

Product Details

Purpose:	NEDD4 (Human) Recombinant Protein (Q01)
Sequence:	HTKYKNGYSA NHQVIQWFWK AVLMMDSEKR IRLQLQFVTGT SRVPMNGFAE LYGSNGPQSF TVEQWGTPEK LPRAHTCFNR LDLPPYESFE ELWDKLQMAI ENTQGFDGVD
Characteristics:	Human NEDD4 partial ORF (NP_006145, 791 a.a. - 900 a.a.) recombinant protein with GST-tag at N-terminal.
Purification:	in vitro wheat germ expression system

Target Details

Target:	NEDD4
Alternative Name:	NEDD4 (NEDD4 Products)

Target Details

Background:	Full Gene Name: neural precursor cell expressed, developmentally down-regulated 4 Synonyms: KIAA0093,MGC176705,NEDD4-1,RPF1
Gene ID:	4734
NCBI Accession:	NM_006154
Pathways:	Notch Signaling , Intracellular Steroid Hormone Receptor Signaling Pathway , Skeletal Muscle Fiber Development , Signaling Events mediated by VEGFR1 and VEGFR2

Application Details

Application Notes:	Optimal working dilution should be determined by the investigator.
Comment:	Preparation method: in vitro, wheat germ expression system Product Quality tested by: 12.5% SDS-PAGE Stained with Coomassie Blue.
Restrictions:	For Research Use only

Handling

Buffer:	50 mM Tris-HCl, 10 mM reduced Glutathione, pH =8.0 in the elution buffer.
Handling Advice:	Aliquot to avoid repeated freezing and thawing.
Storage:	-80 °C
Storage Comment:	Best use within three months from the date of receipt of this protein.

Images

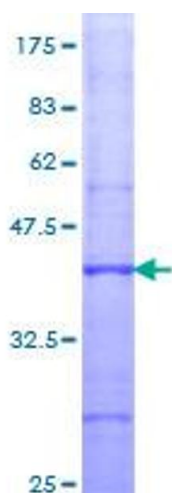


Image 1.