



[Go to Product page](#)

Datasheet for ABIN1312348

NEK10 Protein (AA 1-474) (GST tag)

1 Image

Overview

Quantity:	10 µg
Target:	NEK10
Protein Characteristics:	AA 1-474
Origin:	Human
Source:	Wheat germ
Protein Type:	Recombinant
Purification tag / Conjugate:	This NEK10 protein is labelled with GST tag.
Application:	ELISA, Western Blotting (WB), Affinity Purification (AP), Antibody Array (AA)

Product Details

Purpose:	NEK10 (Human) Recombinant Protein (P01)
Sequence:	MVPVQPAEPP EVLKSEPYGE KADVVAVGCI LYQMATLSPP FYSTNMLSLA TKIVEAVYEP VPEGIYSEKV TDTISRCLTP DAEARPDIVE VSSMISDVMM KYLDNLSTSQ LSLEKKLERE RRRTQRYFME ANRNTVTCHH ELAVLSHETF EKASLSSSSS GAASKSELS ESADLPPEGF QASYGKDEDR ACDEILSDDN FNLENAEKDT YSEVDDELDI SDNSSSSSSS PLKESTFNIL KRSFSASGGE RQSQTRDFTG GTGSRPRPAL LPLDLLLKVP PHMLRAHIKE IEAELVTGWQ SHSLPAVILR NLKDHASAGI AVSQRKVRQI SDPIQQILIQ LHKIYYITQL PPALHHNLKR RVIERFKKSL FSQSNPCNL KSEIKLSQG SPEIEPNFF TADYHLLHRS SGGNSLSPND PTGLPTSIEL EEGITYEQMQ TVIEEVLEES GYYNFTSNRY HSWPWGTKNH PTKR
Characteristics:	Human NEK10 full-length ORF (NP_001026911.1, 1 a.a. - 474 a.a.) recombinant protein with GST-tag at N-terminal.

Product Details

Purification: in vitro wheat germ expression system

Target Details

Target: NEK10

Alternative Name: NEK10 ([NEK10 Products](#))

Background: Full Gene Name: NIMA (never in mitosis gene a)- related kinase 10
Synonyms: FLJ32685

Gene ID: 152110

NCBI Accession: [NM_001031741](#)

Application Details

Application Notes: Optimal working dilution should be determined by the investigator.

Comment: Preparation method: in vitro, wheat germ expression system
Product Quality tested by: 12.5% SDS-PAGE Stained with Coomassie Blue.

Restrictions: For Research Use only

Handling

Buffer: 50 mM Tris-HCl, 10 mM reduced Glutathione, pH =8.0 in the elution buffer.

Handling Advice: Aliquot to avoid repeated freezing and thawing.

Storage: -80 °C

Storage Comment: Best use within three months from the date of receipt of this protein.

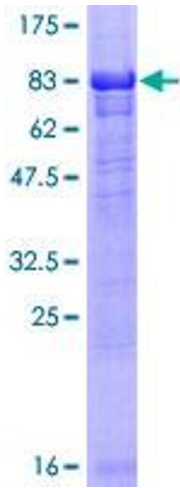


Image 1.