



[Go to Product page](#)

Datasheet for ABIN1312350

NEK10 Protein (AA 211-300) (GST tag)

1 Image

Overview

Quantity:	10 µg
Target:	NEK10
Protein Characteristics:	AA 211-300
Origin:	Human
Source:	Wheat germ
Protein Type:	Recombinant
Purification tag / Conjugate:	This NEK10 protein is labelled with GST tag.
Application:	ELISA, Western Blotting (WB), Affinity Purification (AP), Antibody Array (AA)

Product Details

Purpose:	NEK10 (Human) Recombinant Protein (Q01)
Sequence:	R Y F M E A N R N T V T C H H E L A V L S H E T F E K A S L S S S S G A A S L K S E L S E S A D L P P E G F Q A S Y G K D E D R A C D E I L S D D N F N L E N A E K D T Y S E V D
Characteristics:	Human NEK10 partial ORF (NP_689747, 211 a.a. - 300 a.a.) recombinant protein with GST-tag at N-terminal.
Purification:	in vitro wheat germ expression system

Target Details

Target:	NEK10
Alternative Name:	NEK10 (NEK10 Products)

Target Details

Background:	Full Gene Name: NIMA (never in mitosis gene a)- related kinase 10 Synonyms: FLJ32685
Gene ID:	152110
NCBI Accession:	NM_152534

Application Details

Application Notes:	Optimal working dilution should be determined by the investigator.
Comment:	Preparation method: in vitro, wheat germ expression system Product Quality tested by: 12.5% SDS-PAGE Stained with Coomassie Blue.
Restrictions:	For Research Use only

Handling

Buffer:	50 mM Tris-HCl, 10 mM reduced Glutathione, pH =8.0 in the elution buffer.
Handling Advice:	Aliquot to avoid repeated freezing and thawing.
Storage:	-80 °C
Storage Comment:	Best use within three months from the date of receipt of this protein.

Images

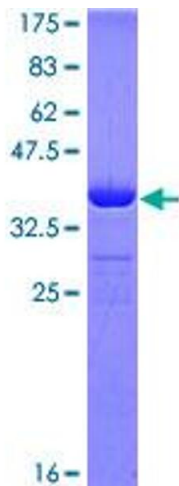


Image 1.