



[Go to Product page](#)

Datasheet for ABIN1312391

NETO1 Protein (AA 1-533) (GST tag)

1 Image

Overview

Quantity:	10 µg
Target:	NETO1
Protein Characteristics:	AA 1-533
Origin:	Human
Source:	Wheat germ
Protein Type:	Recombinant
Purification tag / Conjugate:	This NETO1 protein is labelled with GST tag.
Application:	ELISA, Western Blotting (WB), Affinity Purification (AP), Antibody Array (AA)

Product Details

Purpose:	NETO1 (Human) Recombinant Protein (P01)
Sequence:	MIHGRSVLHI VASLILHLS GATKKGTEKQ TTSETQKSVQ CGTWTKHAEG GIFTSPNYPS KYPPDRECIY IIEAAPRQCI ELYFDEKYSI EPSWECKFDH IEVRDGPFGF SPIIGRFCGQ QNPPVIKSSG RFLWIKFFAA GELESMGFSA RYNFTDPDF KDLGALKPLP ACEFEMGGSE GIVESIQIMK EGKATASEAV DCKWYIRAPP RSKIYLRFLD YEMQNSNECK RNFVAVYDGS SSVEDLKAKF CSTVANDVML RTGLGVIRMW ADEGSRNSRF QMLFTSFQEP PCEGNTFFCH SNMCINNTLV CNGLQNCVYP WDENHCCKEKR KTSLLDQLTN TSGTVIGVTS CIVILIIS VIVQIKQPRK KYVQRKSDFD QTVFQEVFEP PHYELCTLRG TGATADFADV ADDFENYHKL RRSSSKCIHD HHCGSQLSST KGSRSNLSTR DASILTEMPT QPGKPLIPPM NRRNILVMKH NYSQDAADAC DIDEIEEVPT TSHRLSRHDK AVQRFCLIGS LSKHESEYNT TRV
Characteristics:	Human NETO1 full-length ORF (AAH50329.1, 1 a.a. - 533 a.a.) recombinant protein with GST-tag at N-terminal.

Product Details

Purification: in vitro wheat germ expression system

Target Details

Target: NETO1

Alternative Name: NETO1 ([NETO1 Products](#))

Background: Full Gene Name: neuropilin (NRP) and tolloid (TLL)-like 1
Synonyms: BCTL1,BTCL1

Gene ID: 81832

Pathways: [Regulation of long-term Neuronal Synaptic Plasticity](#)

Application Details

Application Notes: Optimal working dilution should be determined by the investigator.

Comment: Preparation method: in vitro, wheat germ expression system
Product Quality tested by: 12.5% SDS-PAGE Stained with Coomassie Blue.

Restrictions: For Research Use only

Handling

Buffer: 50 mM Tris-HCl, 10 mM reduced Glutathione, pH =8.0 in the elution buffer.

Handling Advice: Aliquot to avoid repeated freezing and thawing.

Storage: -80 °C

Storage Comment: Best use within three months from the date of receipt of this protein.

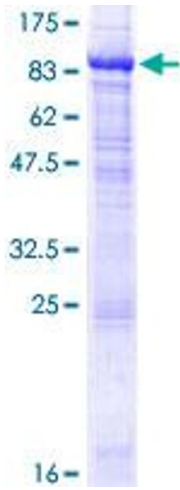


Image 1.