



[Go to Product page](#)

Datasheet for ABIN1312393

NETO1 Protein (AA 434-533) (GST tag)

1 Image

Overview

Quantity:	10 µg
Target:	NETO1
Protein Characteristics:	AA 434-533
Origin:	Human
Source:	Wheat germ
Protein Type:	Recombinant
Purification tag / Conjugate:	This NETO1 protein is labelled with GST tag.
Application:	ELISA, Western Blotting (WB), Affinity Purification (AP), Antibody Array (AA)

Product Details

Purpose:	NETO1 (Human) Recombinant Protein (Q01)
Sequence:	GSQLSSTKGS RSNLSTRDAS ILTEMPQPG KPLIPPMNRR NILVMKHNYS QDAADACDID EIEEVPTTSH RLSRHDKAVQ RFCLIGLSLK HESEYNTTRV
Characteristics:	Human NETO1 partial ORF (NP_620416.1, 434 a.a. - 533 a.a.) recombinant protein with GST-tag at N-terminal.
Purification:	in vitro wheat germ expression system

Target Details

Target:	NETO1
Alternative Name:	NETO1 (NETO1 Products)

Target Details

Background:	Full Gene Name: neuropilin (NRP) and tolloid (TLL)-like 1 Synonyms: BCTL1,BTCL1
Gene ID:	81832
NCBI Accession:	NM_138966
Pathways:	Regulation of long-term Neuronal Synaptic Plasticity

Application Details

Application Notes:	Optimal working dilution should be determined by the investigator.
Comment:	Preparation method: in vitro, wheat germ expression system Product Quality tested by: 12.5% SDS-PAGE Stained with Coomassie Blue.
Restrictions:	For Research Use only

Handling

Buffer:	50 mM Tris-HCl, 10 mM reduced Glutathione, pH =8.0 in the elution buffer.
Handling Advice:	Aliquot to avoid repeated freezing and thawing.
Storage:	-80 °C
Storage Comment:	Best use within three months from the date of receipt of this protein.

Images

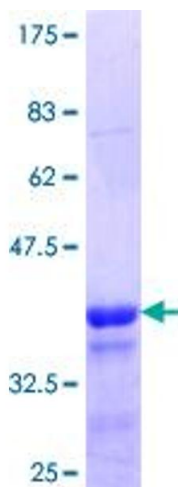


Image 1.