

Datasheet for ABIN1312395
NETO2 Protein (AA 1-148) (GST tag)



[Go to Product page](#)

1 Image

Overview

Quantity:	10 µg
Target:	NETO2
Protein Characteristics:	AA 1-148
Origin:	Human
Source:	Wheat germ
Protein Type:	Recombinant
Purification tag / Conjugate:	This NETO2 protein is labelled with GST tag.
Application:	ELISA, Western Blotting (WB), Affinity Purification (AP), Antibody Array (AA)

Product Details

Purpose:	NETO2 (Human) Recombinant Protein (P01)
Sequence:	MACKTAFNKT GFQEVFDPPIH YELFSLRDKE ISADLADLSE ELDNYQKMRR SSTASRCIHD HHCGSQASSV KQSRNLSSM ELPFRNDFAQ PQPMKTFNST FKKSSYTFKQ GHECPEQALE DRVMEEIPCE IYVRGREDSA QASISIDF
Characteristics:	Human NETO2 full-length ORF (AAH12381.1, 1 a.a. - 148 a.a.) recombinant protein with GST-tag at N-terminal.
Purification:	in vitro wheat germ expression system

Target Details

Target:	NETO2
Alternative Name:	NETO2 (NETO2 Products)

Target Details

Background:	Full Gene Name: neuropilin (NRP) and tolloid (TLL)-like 2 Synonyms: FLJ10430,FLJ14724,FLJ90456,NEOT2
Gene ID:	81831

Application Details

Application Notes:	Optimal working dilution should be determined by the investigator.
Comment:	Preparation method: in vitro, wheat germ expression system Product Quality tested by: 12.5% SDS-PAGE Stained with Coomassie Blue.
Restrictions:	For Research Use only

Handling

Buffer:	50 mM Tris-HCl, 10 mM reduced Glutathione, pH =8.0 in the elution buffer.
Handling Advice:	Aliquot to avoid repeated freezing and thawing.
Storage:	-80 °C
Storage Comment:	Best use within three months from the date of receipt of this protein.

Images

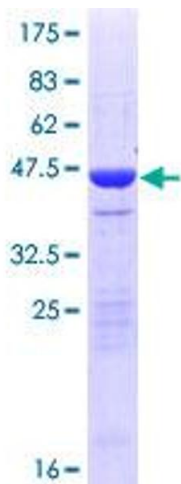


Image 1.