



[Go to Product page](#)

Datasheet for ABIN1312403

Neu3 Protein (AA 411-520) (GST tag)

1 Image

Overview

Quantity:	10 µg
Target:	Neu3
Protein Characteristics:	AA 411-520
Origin:	Human
Source:	Wheat germ
Protein Type:	Recombinant
Purification tag / Conjugate:	This Neu3 protein is labelled with GST tag.
Application:	ELISA, Western Blotting (WB), Affinity Purification (AP), Antibody Array (AA)

Product Details

Purpose:	NEU3 (Human) Recombinant Protein (Q01)
Sequence:	VTWHHGRLIR PMVTVECEVA EVTGRAGHPV LYCSARTPNR CRAEALSTDH GEGFQRLALS RQLCEPPHGC QGSVVSFRPL EIPHRCQDSS SKDAPTIQQS SPGSSLRLEE
Characteristics:	Human NEU3 partial ORF (NP_006647.2, 411 a.a. - 520 a.a.) recombinant protein with GST-tag at N-terminal.
Purification:	in vitro wheat germ expression system

Target Details

Target:	Neu3
Alternative Name:	NEU3 (Neu3 Products)

Target Details

Background:	Full Gene Name: sialidase 3 (membrane sialidase) Synonyms: FLJ12388,SIAL3
Gene ID:	10825
NCBI Accession:	NM_006656

Application Details

Application Notes:	Optimal working dilution should be determined by the investigator.
Comment:	Preparation method: in vitro, wheat germ expression system Product Quality tested by: 12.5% SDS-PAGE Stained with Coomassie Blue.
Restrictions:	For Research Use only

Handling

Buffer:	50 mM Tris-HCl, 10 mM reduced Glutathione, pH =8.0 in the elution buffer.
Handling Advice:	Aliquot to avoid repeated freezing and thawing.
Storage:	-80 °C
Storage Comment:	Best use within three months from the date of receipt of this protein.

Images

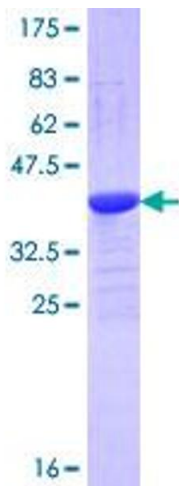


Image 1.