

Datasheet for ABIN1312465
NFE2L3 Protein (AA 1-694) (GST tag)



[Go to Product page](#)

1 Image

Overview

Quantity:	10 µg
Target:	NFE2L3
Protein Characteristics:	AA 1-694
Origin:	Human
Source:	Wheat germ
Protein Type:	Recombinant
Purification tag / Conjugate:	This NFE2L3 protein is labelled with GST tag.
Application:	ELISA, Western Blotting (WB), Affinity Purification (AP), Antibody Array (AA)

Product Details

Purpose:	NFE2L3 (Human) Recombinant Protein (P01)
Sequence:	MKHLKRWWSA GGLLHLTLL LSLAGLRVDL DLYLLLPPPT LLQDELLFLG GPASSAYALS PFSASGGWGR AGHLHPKGRE LDPAAPPEGQ LLREVRALGV PFVPRTSVDA WLHVSVAAGS ADEAHGLLGA AAASSTGGAG ASVDGGSQAV QGGGGDPRAA RSGPLDAGEE EKAPAEPTAQ VPDAGGCASE ENGLVREKHE AVDHSSQHEE NEERVSAQKE NSLQQNDDDE NKIAEKPDWE AEKTTESRNE RHLNGTDTSF SLEDLFQLLS SQPENSLEGI SLGDILLPGS ISDGMNSSAH YHVNFSAIS QDVNLHEAIL LCPNNTFRRD PTARTSQSQE PFLQLNSHTT NPEQTLPGTN LTGFLSPVDN HMRNLTSQDL LYDLINIFD EINLM SLATE DNFDPIDVSQ LFDEPDSDSG LSLDSSHNT SVIKSNSSHS VCDEGAIGYC TDHESSSHD LEGAVGGYYP EPSKLCHLDQ SDSDFHGLDT FQHVFNHTY HLQPTAPEST SEPFPWPGKS QKIRSRYLET TDRNLSRDEQ RAKALHIPFS VDEIVGMPVD SFNSMLSRY Y LTDLQVSLIR DIRRRGKNKV AAQNCRKRKL DIILNLEDDV CNLQAKKETL KREQAQC NKA INIMKQKLHD LYHDIFSRLR DDQGRPVPNP

Product Details

HYALQCTHDG SILIVPKELV ASGHKKETQK GKRK

Characteristics: Human NFE2L3 full-length ORF (NP_004280.4, 1 a.a. - 694 a.a.) recombinant protein with GST-tag at N-terminal.

Purification: in vitro wheat germ expression system

Target Details

Target: NFE2L3

Alternative Name: NFE2L3 ([NFE2L3 Products](#))

Background: Full Gene Name: nuclear factor (erythroid-derived 2)-like 3
Synonyms: NRF3

Gene ID: 9603

NCBI Accession: [NM_004289](#)

Application Details

Application Notes: Optimal working dilution should be determined by the investigator.

Comment: Preparation method: in vitro, wheat germ expression system
Product Quality tested by: 12.5% SDS-PAGE Stained with Coomassie Blue.

Restrictions: For Research Use only

Handling

Buffer: 50 mM Tris-HCl, 10 mM reduced Glutathione, pH =8.0 in the elution buffer.

Handling Advice: Aliquot to avoid repeated freezing and thawing.

Storage: -80 °C

Storage Comment: Best use within three months from the date of receipt of this protein.

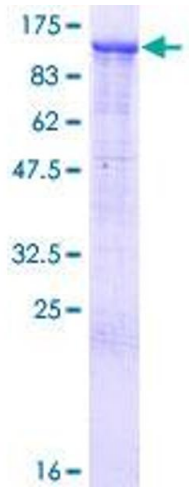


Image 1.