



[Go to Product page](#)

Datasheet for ABIN1312478

NFIX Protein (AA 1-441) (GST tag)

1 Image

Overview

Quantity:	10 µg
Target:	NFIX (MLZE)
Protein Characteristics:	AA 1-441
Origin:	Human
Source:	Wheat germ
Protein Type:	Recombinant
Purification tag / Conjugate:	This NFIX protein is labelled with GST tag.
Application:	Western Blotting (WB), ELISA, Affinity Purification (AP), Antibody Array (AA)

Product Details

Purpose:	NFIX (Human) Recombinant Protein (P01)
Sequence:	<p>MYSPLYCLTQD EFHPPFIEALL PHVRAFSYTW FNLQARKRKY FKKHEKRMSK DEERAVKDEL LGEKPEIKQK WASRLLAKLR KDIRPEFRED YVLTITGKKP PCCVLSNPDQ KGIKIRRIDCL RQADKVVRLD LVMVILFKGI PLESTDGERL YKSPQCSNPG LCVQPHHIGV TIKELDLyla YFVHTPESGQ SDSSNQGGDA DIKPLPNGHL SFQDCFVTSG VWNVTELVRV SQTPVATASG PNFSLADLES PSYNNINQVT LGRRSITSPP STSTTKRPKS IDDSEMESPV DDFVYPGTGR SPAAGSSQSS GWPNDVDAGP ASLKKSGKLD FCSALSSQGS SPRMAFTHHP LPVLAGVRPG SPRATASALH FPSTSIIQQS SPYFTHPTIR YHHHHGQDSL KEFVQFVCSG GSGQATGQHS QRQAPPLPTG LSASDPGTAT F</p>
Characteristics:	Human NFIX full-length ORF (NP_002492.2, 1 a.a. - 441 a.a.) recombinant protein with GST-tag at N-terminal.

Product Details

Purification: in vitro wheat germ expression system

Target Details

Target: NFIX (MLZE)

Alternative Name: NFIX ([MLZE Products](#))

Background: Gene: nuclear factor I/X (CCAAT-binding transcription factor)
Synonyms: NF1A

Gene ID: 4784

NCBI Accession: [NM_002501](#)

Pathways: [Skeletal Muscle Fiber Development](#)

Application Details

Application Notes: Optimal working dilution should be determined by the investigator.

Restrictions: For Research Use only

Handling

Buffer: 50 mM Tris-HCl, 10 mM reduced Glutathione, pH =8.0 in the elution buffer.

Handling Advice: Aliquot to avoid repeated freezing and thawing.

Storage: -80 °C

Storage Comment: Best use within three months from the date of receipt of this protein.

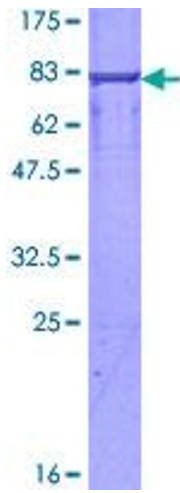


Image 1.