



[Go to Product page](#)

Datasheet for ABIN1312491

## NFKBIB Protein (AA 1-356) (GST tag)

### 1 Image

#### Overview

Quantity:	10 µg
Target:	NFKBIB
Protein Characteristics:	AA 1-356
Origin:	Human
Source:	Wheat germ
Protein Type:	Recombinant
Purification tag / Conjugate:	This NFKBIB protein is labelled with GST tag.
Application:	Western Blotting (WB), ELISA, Affinity Purification (AP), Antibody Array (AA)

#### Product Details

Purpose:	NFKBIB (Human) Recombinant Protein (P02)
Sequence:	MAGVACLGKA ADADEWCDSG LGS LGPDAAA PGGPGLGAEL GPGLSWAPLV FGYVTEDGDT ALHLAVIHQH EPFLDFLLGF SAGTEYMDLQ NDLGQTALHL AAILGETSTV EKLYAAGAGL CVAERRGHTA LHLACRVGAH ACARALLQPR PRRPREAPDT YLAQGPDRTP DTNHTPVLY PDSLEKEEEE ESEEDWKLQL EAENYEGHTP LHVAVIHKDV EMVRLLRDAG ADLDKPEPTC GRSPLHLAVE AQAADVLELL LRAGANPAAR MYGGRTPLGS AMLRPNPILA RLLRAHGAP PEGEDEKSGP CSSSSDSDSG DEGDEYDDIV VHSSRSQTRL PPTPASKPLP DDP RPV
Characteristics:	Human NFKBIB full-length ORF ( NP_002494.2, 1 a.a. - 356 a.a.) recombinant protein with GST-tag at N-terminal.
Purification:	in vitro wheat germ expression system

## Target Details

---

Target:	NFKBIB
Alternative Name:	NFKBIB ( <a href="#">NFKBIB Products</a> )
Background:	Full Gene Name: nuclear factor of kappa light polypeptide gene enhancer in B-cells inhibitor, beta Synonyms: IKBB,TRIP9
Gene ID:	4793
NCBI Accession:	<a href="#">NM_002503</a>
Pathways:	<a href="#">NF-kappaB Signaling</a> , <a href="#">Activation of Innate immune Response</a> , <a href="#">Maintenance of Protein Location</a> , <a href="#">Toll-Like Receptors Cascades</a>

## Application Details

---

Application Notes:	Optimal working dilution should be determined by the investigator.
Comment:	Preparation method: in vitro, wheat germ expression system Product Quality tested by: 12.5% SDS-PAGE Stained with Coomassie Blue.
Restrictions:	For Research Use only

## Handling

---

Buffer:	50 mM Tris-HCl, 10 mM reduced Glutathione, pH =8.0 in the elution buffer.
Handling Advice:	Aliquot to avoid repeated freezing and thawing.
Storage:	-80 °C
Storage Comment:	Best use within three months from the date of receipt of this protein.

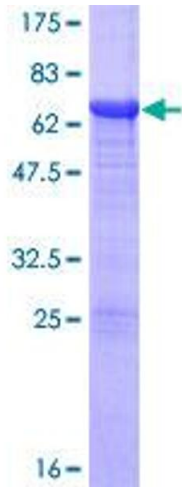


Image 1.