

Datasheet for ABIN1312507

NFS1 Protein (AA 29-138) (GST tag)



[Go to Product page](#)

1 Image

Overview

Quantity:	10 µg
Target:	NFS1
Protein Characteristics:	AA 29-138
Origin:	Human
Source:	Wheat germ
Protein Type:	Recombinant
Purification tag / Conjugate:	This NFS1 protein is labelled with GST tag.
Application:	ELISA, Western Blotting (WB), Affinity Purification (AP), Antibody Array (AA)

Product Details

Purpose:	NFS1 (Human) Recombinant Protein (Q01)
Sequence:	LRLRVGDRAP QSAVPADTAA APEVGPVLRP LYMDVQATTP LDPRVLDAML PYLINYYGNP HSRTHAYGWE SEAAMERARQ QVASLIGADP REIIFTSGAT ESNNIAIKTE
Characteristics:	Human NFS1 partial ORF (NP_858931.1, 29 a.a. - 138 a.a.) recombinant protein with GST-tag at N-terminal.
Purification:	in vitro wheat germ expression system

Target Details

Target:	NFS1
Alternative Name:	NFS1 (NFS1 Products)

Target Details

Background:	Full Gene Name: NFS1 nitrogen fixation 1 homolog (<i>S. cerevisiae</i>) Synonyms: HUSSY-08,IscS,NIFS
Gene ID:	9054
NCBI Accession:	NM_181679
Pathways:	Transition Metal Ion Homeostasis

Application Details

Application Notes:	Optimal working dilution should be determined by the investigator.
Comment:	Preparation method: in vitro, wheat germ expression system Product Quality tested by: 12.5% SDS-PAGE Stained with Coomassie Blue.
Restrictions:	For Research Use only

Handling

Buffer:	50 mM Tris-HCl, 10 mM reduced Glutathione, pH =8.0 in the elution buffer.
Handling Advice:	Aliquot to avoid repeated freezing and thawing.
Storage:	-80 °C
Storage Comment:	Best use within three months from the date of receipt of this protein.

Images

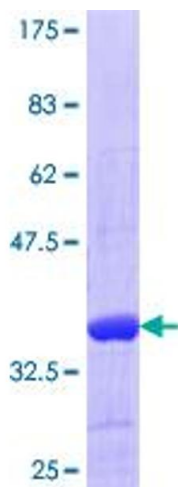


Image 1.