



[Go to Product page](#)

Datasheet for ABIN1312521

NFYC Protein (AA 1-335) (GST tag)

1 Image

Overview

Quantity:	10 µg
Target:	NFYC
Protein Characteristics:	AA 1-335
Origin:	Human
Source:	Wheat germ
Protein Type:	Recombinant
Purification tag / Conjugate:	This NFYC protein is labelled with GST tag.
Application:	Western Blotting (WB), ELISA, Affinity Purification (AP), Antibody Array (AA)

Product Details

Purpose:	NFYC (Human) Recombinant Protein (P01)
Sequence:	MSTEGGFGGT SSSDAQSLQ SFWPRVMEEI RNLTVKDFRV QELPLARIKK IMKLEDEDVKM ISAEAPVLFA KAAQIFITEL TLRAWIHTED NKRRTLQRND IAMAITKFDQ FDFLIDIVPR DELKPPKRQE EVRQSVTPAE PVQYYFTLAQ QPTAVQVQQG QGQQTTSST TTIQPGQIII AQPQGGQTPP VTMQVGEQQ VQIVQAQPOG QAQQAQSGTG QTMQVMQQII TNTGEIQQIP VQLNAGQLQY IRLAQPVSGT QVVGGQIQL ATNAQQITQT EVQQGQQQFS QFTDGGQLYQ IQQVTMPAGQ DLAQPMFIQS ANQPSDGGAP QVTGD
Characteristics:	Human NFYC full-length ORF (NP_055038.2, 1 a.a. - 335 a.a.) recombinant protein with GST-tag at N-terminal.
Purification:	in vitro wheat germ expression system

Target Details

Target:	NFYC
Alternative Name:	NFYC (NFYC Products)
Background:	Full Gene Name: nuclear transcription factor Y, gamma Synonyms: CBF-C,CBFC,DKFZp667G242,FLJ45775,H1TF2A,HAP5,HSM,NF-YC
Gene ID:	4802
NCBI Accession:	NM_014223
Pathways:	Regulation of Lipid Metabolism by PPARalpha

Application Details

Application Notes:	Optimal working dilution should be determined by the investigator.
Comment:	Preparation method: in vitro, wheat germ expression system Product Quality tested by: 12.5% SDS-PAGE Stained with Coomassie Blue.
Restrictions:	For Research Use only

Handling

Buffer:	50 mM Tris-HCl, 10 mM reduced Glutathione, pH =8.0 in the elution buffer.
Handling Advice:	Aliquot to avoid repeated freezing and thawing.
Storage:	-80 °C
Storage Comment:	Best use within three months from the date of receipt of this protein.

Images

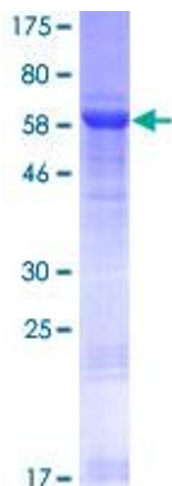


Image 1.