



[Go to Product page](#)

Datasheet for ABIN1312549

NHLRC2 Protein (AA 1-367) (GST tag)

1 Image

Overview

Quantity:	10 µg
Target:	NHLRC2
Protein Characteristics:	AA 1-367
Origin:	Human
Source:	Wheat germ
Protein Type:	Recombinant
Purification tag / Conjugate:	This NHLRC2 protein is labelled with GST tag.
Application:	ELISA, Western Blotting (WB), Affinity Purification (AP), Antibody Array (AA)

Product Details

Purpose:	NHLRC2 (Human) Recombinant Protein (P01)
Sequence:	MAGTHQIWAL LLD SGKLPKK NELTKGTCLR FAGSGNEENR NNAYPHKAGF AQPSGLSLAS EDPWSCLFVA DSESSTVRTV SLKDGAVKHL VGGERDPMNL FAFGDVDGVG INAKLQHPLG VTWDKKNRLL YVADSYNHKI KVVDPKTKNC TTLAGTGDTN NVTSSSFTE TFNEPGLLCI GENGELLYVA DTNNHQIKVM DLETKMVSVL PIFRSENAWV DGPFLVEKQK TLPKLPKSAP SIRLSPVTAC AGQTLQFKLR LDLPSGSKLT EGVSSCWFLT AEGNEWLLQG QIAAGDIENI SSQPTISLQI PDDCLSLEAI VSVSVFLYYC SADSSACMMK AILFSQPLQI TDTQQGCIAP VELRYVF
Characteristics:	Human NHLRC2 full-length ORF (AAH32598.1, 1 a.a. - 367 a.a.) recombinant protein with GST-tag at N-terminal.
Purification:	in vitro wheat germ expression system

Target Details

Target:	NHLRC2
Alternative Name:	NHLRC2 (NHLRC2 Products)
Background:	Full Gene Name: NHL repeat containing 2 Synonyms: DKFZp779F115,FLJ20147,FLJ25621,FLJ33312,MGC45492
Gene ID:	374354

Application Details

Application Notes:	Optimal working dilution should be determined by the investigator.
Comment:	Preparation method: in vitro, wheat germ expression system Product Quality tested by: 12.5% SDS-PAGE Stained with Coomassie Blue.
Restrictions:	For Research Use only

Handling

Buffer:	50 mM Tris-HCl, 10 mM reduced Glutathione, pH =8.0 in the elution buffer.
Handling Advice:	Aliquot to avoid repeated freezing and thawing.
Storage:	-80 °C
Storage Comment:	Best use within three months from the date of receipt of this protein.

Images

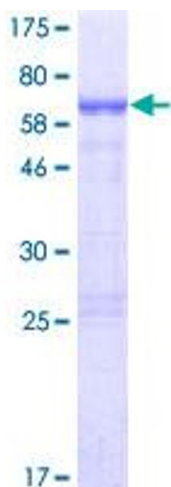


Image 1.