



[Go to Product page](#)

Datasheet for ABIN1312561

## Nhs Protein (AA 1532-1629) (GST tag)

### 1 Image

#### Overview

|                               |   |
|-------------------------------|---|
| Quantity:                     | 10 µg   |
| Target:                       | Nhs   |
| Protein Characteristics:      | AA 1532-1629  |
| Origin:                       | Human   |
| Source:                       | Wheat germ  |
| Protein Type:                 | Recombinant   |
| Purification tag / Conjugate: | This Nhs protein is labelled with GST tag.                                    |
| Application:                  | Affinity Purification (AP), Antibody Array (AA), ELISA, Western Blotting (WB) |

#### Product Details

|                  |  |
|------------------|--|
| Purpose:         | NHS (Human) Recombinant Protein (Q01)  |
| Sequence:        | TAESPQSTDD AHQGSQGAEA LSPLSPCSPR VNAEGFSSKS FATSASARVG RSRAPPAASS<br>SRYSVRCRLY NTPMQAISEG ETENSDGSPH DDRSSQSS |
| Characteristics: | Human NHS partial ORF ( NP_938011.1, 1532 a.a. - 1629 a.a.) recombinant protein with GST-tag at N-terminal.    |
| Purification:    | in vitro wheat germ expression system  |

#### Target Details

|                   |                                      |
|-------------------|--------------------------------------|
| Target:           | Nhs                                  |
| Alternative Name: | NHS ( <a href="#">Nhs Products</a> ) |

## Target Details

|                 |   |
|-----------------|---|
| Background:     | Full Gene Name: Nance-Horan syndrome (congenital cataracts and dental anomalies)<br>Synonyms: DKFZp781F2016,DKFZp781L0254,SCML1 |
| Gene ID:        | 4810  |
| NCBI Accession: | <a href="#">NM_198270</a>   |

## Application Details

|                    |  |
|--------------------|--|
| Application Notes: | Optimal working dilution should be determined by the investigator.   |
| Comment:           | Preparation method: in vitro, wheat germ expression system<br>Product Quality tested by: 12.5% SDS-PAGE Stained with Coomassie Blue. |
| Restrictions:      | For Research Use only  |

## Handling

|                  |   |
|------------------|---|
| Buffer:          | 50 mM Tris-HCl, 10 mM reduced Glutathione, pH =8.0 in the elution buffer. |
| Handling Advice: | Aliquot to avoid repeated freezing and thawing.                           |
| Storage:         | -80 °C  |
| Storage Comment: | Best use within three months from the date of receipt of this protein.    |

## Images

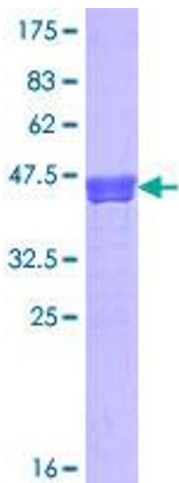


Image 1.