



Datasheet for ABIN1312597

Nischarin Protein (NISCH) (AA 1246-1345) (GST tag)



[Go to Product page](#)

1 Image

Overview

Quantity:	10 µg
Target:	Nischarin (NISCH)
Protein Characteristics:	AA 1246-1345
Origin:	Human
Source:	Wheat germ
Protein Type:	Recombinant
Purification tag / Conjugate:	This Nischarin protein is labelled with GST tag.
Application:	Western Blotting (WB), ELISA, Affinity Purification (AP), Antibody Array (AA)

Product Details

Purpose:	NISCH (Human) Recombinant Protein (Q01)
Sequence:	LTGSTPMQVV TCLTRDSYLT HCFLQHLMVV LSSLERTPSP EPVDKDFYSE FGNKTTGKME NYELIHSSRV KFTYPSEEEI GDLTFTVAQK MAEPEKAPAL
Characteristics:	Human NISCH partial ORF (AAH56900, 1246 a.a. - 1345 a.a.) recombinant protein with GST-tag at N-terminal.
Purification:	in vitro wheat germ expression system

Target Details

Target:	Nischarin (NISCH)
Alternative Name:	NISCH (NISCH Products)

Target Details

Background:	Full Gene Name: nischarin Synonyms: FLJ14425,FLJ40413,FLJ90519,I-1,IRAS,KIAA0975
Gene ID:	11188

Application Details

Application Notes:	Optimal working dilution should be determined by the investigator.
Comment:	Preparation method: in vitro, wheat germ expression system Product Quality tested by: 12.5% SDS-PAGE Stained with Coomassie Blue.
Restrictions:	For Research Use only

Handling

Buffer:	50 mM Tris-HCl, 10 mM reduced Glutathione, pH =8.0 in the elution buffer.
Handling Advice:	Aliquot to avoid repeated freezing and thawing.
Storage:	-80 °C
Storage Comment:	Best use within three months from the date of receipt of this protein.

Images

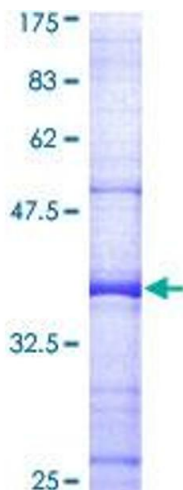


Image 1.