



[Go to Product page](#)

Datasheet for ABIN1312624

Nkx2-2 Protein (AA 165-271) (GST tag)

1 Image

Overview

Quantity:	10 µg
Target:	Nkx2-2
Protein Characteristics:	AA 165-271
Origin:	Human
Source:	Wheat germ
Protein Type:	Recombinant
Purification tag / Conjugate:	This Nkx2-2 protein is labelled with GST tag.
Application:	ELISA, Western Blotting (WB), Affinity Purification (AP), Antibody Array (AA)

Product Details

Purpose:	NKX2-2 (Human) Recombinant Protein (Q01)
Sequence:	IRLTPTQVKI WFQNHRYKMK RARAIEKGM EV TPLSPRRVA VPVLVRDGKP CHALKAQDLA AATFQAGIPF SAYSAQSLQH MQYNAQYSSA STPQYPTAHP LVQAQQW
Characteristics:	Human NKX2-2 partial ORF (NP_002500, 165 a.a. - 271 a.a.) recombinant protein with GST-tag at N-terminal.
Purification:	in vitro wheat germ expression system

Target Details

Target:	Nkx2-2
Alternative Name:	NKX2-2 (Nkx2-2 Products)

Target Details

Background:	Gene: NK2 homeobox 2 Synonyms: NKX2.2, NKX2B
Gene ID:	4821
NCBI Accession:	NM_002509
Pathways:	Dopaminergic Neurogenesis

Application Details

Application Notes:	Optimal working dilution should be determined by the investigator.
Restrictions:	For Research Use only

Handling

Buffer:	50 mM Tris-HCl, 10 mM reduced Glutathione, pH =8.0 in the elution buffer.
Handling Advice:	Aliquot to avoid repeated freezing and thawing.
Storage:	-80 °C
Storage Comment:	Best use within three months from the date of receipt of this protein.

Images

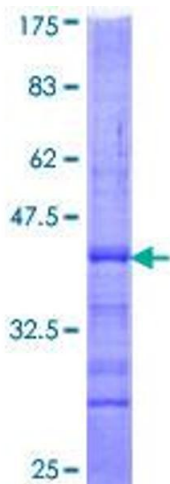


Image 1.