

Datasheet for ABIN1312626

**NK2 Homeobox 3 Protein (NKX2-3) (AA 1-293) (GST tag)**[Go to Product page](#)**1** Image

## Overview

Quantity:	10 µg
Target:	NK2 Homeobox 3 (NKX2-3)
Protein Characteristics:	AA 1-293
Origin:	Human
Source:	Wheat germ
Protein Type:	Recombinant
Purification tag / Conjugate:	This NK2 Homeobox 3 protein is labelled with GST tag.
Application:	ELISA, Western Blotting (WB), Affinity Purification (AP), Antibody Array (AA)

## Product Details

Purpose:	NKX2-3 (Human) Recombinant Protein (P01)
Sequence:	MMLPSPVTST PFSVKDILNL EQQHGHFHGA HLQADLEHHF HSAPCMLAAA EGTQFSDGGE EDEEDEGEKL SYLNSLAAAD GHGDSGLCPQ GYVHTVLRDS CSEPKEHEEE PEVVRDRSQK SCQLKKSLET AGDCKAAEES ERPKPRSRRK PRVLFSQAQV FELERRFKQQ RYLSAPEREH LASSLKLST QVKIWFQNRK YKCKRQRQDK SLELGAHAPP PPPRRVAVPV LVRDGGKPCVT PSAQAYGAPY SVGASAYSYN SFPAYGYGNS AAGPPRRPLP CSPPAARPEA APL
Characteristics:	Human NKX2-3 full-length ORF ( NP_660328.1, 1 a.a. - 293 a.a.) recombinant protein with GST-tag at N-terminal.
Purification:	in vitro wheat germ expression system

## Target Details

Target:	NK2 Homeobox 3 (NKX2-3)
Alternative Name:	NKX2-3 ( <a href="#">NKX2-3 Products</a> )
Background:	Full Gene Name: NK2 transcription factor related, locus 3 (Drosophila) Synonyms: CSX3,NK2.3,NKX2.3,NKX2C,NKX4-3
Gene ID:	159296
NCBI Accession:	<a href="#">NM_145285</a>

## Application Details

Application Notes:	Optimal working dilution should be determined by the investigator.
Comment:	Preparation method: in vitro, wheat germ expression system Product Quality tested by: 12.5% SDS-PAGE Stained with Coomassie Blue.
Restrictions:	For Research Use only

## Handling

Buffer:	50 mM Tris-HCl, 10 mM reduced Glutathione, pH =8.0 in the elution buffer.
Handling Advice:	Aliquot to avoid repeated freezing and thawing.
Storage:	-80 °C
Storage Comment:	Best use within three months from the date of receipt of this protein.

## Images

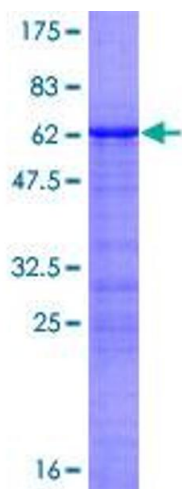


Image 1.