

Datasheet for ABIN1312664  
**NLRP11 Protein (AA 1-1033) (GST tag)**



[Go to Product page](#)

1 Image

Overview

Quantity:	25 µg
Target:	NLRP11
Protein Characteristics:	AA 1-1033
Origin:	Human
Source:	Wheat germ
Protein Type:	Recombinant
Purification tag / Conjugate:	This NLRP11 protein is labelled with GST tag.
Application:	ELISA, Western Blotting (WB), Affinity Purification (AP), Antibody Array (AA)

Product Details

Purpose:	NLRP11 (Human) Recombinant Protein (P01)
Sequence:	MAESDSTDFD LLWYLENLSD KEFQSFKKYL ARKILDFKLP QFPLIQMTKE ELANVLPISY EGQYIWNMLF SIFSMRKED LCRKIIGRRN RNQEACKAVM RRFMLQWES HTFGKFHYKF FRDVSSDVFY ILQLAYDSTS YYSANNLNVF LMGERASGKT IVINLAVLRW IKGEMWQNM SYVVHLTSHE INQMTNSSLA ELIAKWDPDG QAPIADILSD PKKLLFILED LDNIRFELNV NESALCSNST QKVPIVLLV SLLKRKMAPG CWFLISSRPT RGNNVKTFK EVDCCTTLQL SNGKREIYFN SFFKDRQRAS AALQLVHEDE ILVGLCRVAI LCWITCTVLK RQMDKGRDFQ LCCQTPTDLH AHFLADALTS EAGLTANQYH LGLLKRLCLL AAGGLFLSTL NFSGEDLRVC GFTEADVSVL QANILLPSN THKDRYKFIH LNVQEFCTAI AFLMAVPNYL IPSGSREYKE KREQYSDFNQ VFTFIFGLLN ANRRKILETS FGYQLPMVDS FKWYSVGYMK HLDRDPEKLT HHMPLFYCLY ENREEEFVKT IVDALMEVTV YLQSDKMMV SLYCLDYCCH LRTLKLSVQR IFQNKEPLIR PTASQMKSLV YWREICSLFY TMESLRELHI FDNDLNGISE RILSKALEHS

## Product Details

---

SCKLRTLKLS YVSTASGFED LLKALARNRS LTYLSINCTS ISLNMFSLH DILHEPTCQI  
SHLSLMKCDL RASECEEIAS LLISGGSLRK LTLSSNPLRS DGMNILCDAL LHPNCTLISL  
VLVFCCLTEN CCSALGRVLL FSPTLRQLDL CVNRLKNYGV LHVTFPLLFP TCQLEELHLS  
GCFSSDICQ YIAIVATNE KLRSLEIGSN KIEDAGMQLL CGGLRHPNCM LVNIGLEECM  
LTSACCRSLA SVLTTNKTLE RLNLLQNHG NDGVAKLLES LISPDCVLKV VGLPLTGLNT  
QTQQLLMTVK ERKPSLIFLS ETWSLKEGRE IGVTPASQPG SIIPNSNDY MFFKFPRMSA  
AMRTSNTASR QPL

Characteristics: Human NLRP11 full-length ORF ( NP\_659444.1, 1 a.a. - 1033 a.a.) recombinant protein with GST-tag at N-terminal.

Purification: in vitro wheat germ expression system

## Target Details

---

Target: NLRP11

Alternative Name: NLRP11 ([NLRP11 Products](#))

Background: Full Gene Name: NLR family, pyrin domain containing 11  
Synonyms: CLR19.6,FLJ26273,NALP11,NOD17,PAN10,PYPAF6,PYPAF7

Gene ID: 204801

NCBI Accession: [NM\\_145007](#)

Pathways: [Inflammasome](#)

## Application Details

---

Application Notes: Optimal working dilution should be determined by the investigator.

Comment: Preparation method: in vitro, wheat germ expression system  
Product Quality tested by: 12.5% SDS-PAGE Stained with Coomassie Blue.

Restrictions: For Research Use only

## Handling

---

Buffer: 50 mM Tris-HCl, 10 mM reduced Glutathione, pH =8.0 in the elution buffer.

Handling Advice: Aliquot to avoid repeated freezing and thawing.

Storage: -80 °C

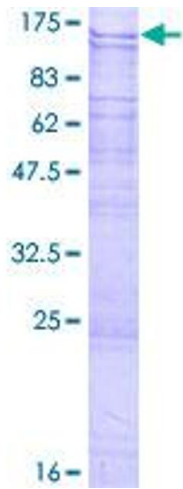
## Handling

---

Storage Comment: Best use within three months from the date of receipt of this protein.

## Images

---



**Image 1.**