

Datasheet for ABIN1312667
NLRP13 Protein (AA 1-1043) (GST tag)



[Go to Product page](#)

1 Image

Overview

Quantity:	10 µg
Target:	NLRP13
Protein Characteristics:	AA 1-1043
Origin:	Human
Source:	Wheat germ
Protein Type:	Recombinant
Purification tag / Conjugate:	This NLRP13 protein is labelled with GST tag.
Application:	ELISA, Western Blotting (WB), Affinity Purification (AP), Antibody Array (AA)

Product Details

Purpose:	NLRP13 (Human) Recombinant Protein (P01)
Sequence:	<p>MNFSVITCPN GGTNQGLLPY LMALDQYQLE EFKLCLEPQQ LMDFWSAPQG HFPRIPWANL RAADPLNLSF LLDEHFPGQ AWKVVLGIFQ TMNLTSLCEK VRAEMKENVQ TQELQDPTQE DLEMLEAAAG NMQTQGCQDP NQEELDELEE ETGNVQAQGC QDPNQEEPEN LEEADHRRKY RENMKAELLE TWDNISWPKD HVYIRNTSKD EHEELQRLLD PNRTRAQAQT IVLVGRAGVG KTTLAMQAML HWANGVLFQQ RFSYVFLSC HKIRYMKETT FAELISLDWP DFDAPIEEFM SQPEKLLFII DGFEEIISE SRSESLDDGS PCTDWYQELP VTKILHSLK KELVPLATLL ITIKTWFVRD LKASLVNPCF VQITGFTGDD LRVYFMRHFD DSSEVEKILQ QLRKNETLFH SCSAPMVCWT VCCLKQPKV RYYDLQSITQ TTTSLYAYFF SNLFSTAEVD LADDSWPGQW RALCSLAIEG LWSMNFTFNK EDTEIEGLEV PFIDSLYEFN ILQKINDCGG CTTFTHLFSQ EFFAAMSFVL EEPREFPPHS TKPQEMKMLL QHVLLDKEAY WTPVVLFFFQ LLNKNIAREL EDTLHCKISP RVMEELLKWG EELGKAESAS LQFHILRLFH CLHESQEEDF TKKMLGRIFE VDLNILEDEE</p>

Product Details

LQASSFCLKH CKRLNKLRLS VSSHILERDL EILETSKFDS RMHAWNSICS TLVTNENLHE
LDLSNSKLHA SSVKGLCLAL KNPRCKVQKL TCKSVTPEWV LQDLIALQG NSKLTHLNFS
SNKLGMTVPL ILKALRHSAC NLKYLCEKCNLSAASCQDL ALFLTSIQHV TRLCCLGFNRL
QDDGIKLLCA ALTHPKCALE RLELWFCQLA APACKHLSDA LLQNRSLTHL NLSKNLSLRDE
GVKFLCEALG RPDGNLQSLN LSGCSFTREG CGELANALSH NHNVKILDLG ENDLQDDGVK
LLCEALKPHR ALHTLGLAKC NLTTACCQHL FSVLSSSKSL VNLNLLGNEL DTDGVKMLCK
ALKKSTCRLQ KLG

Characteristics: Human NLRP13 full-length ORF (AAI48743.1, 1 a.a. - 1043 a.a.) recombinant protein with GST-tag at N-terminal.

Purification: in vitro wheat germ expression system

Target Details

Target: NLRP13

Alternative Name: NLRP13 ([NLRP13 Products](#))

Background: Full Gene Name: NLR family, pyrin domain containing 13
Synonyms: CLR19.7,NALP13,NOD14,PAN13

Gene ID: 126204

Pathways: [Inflammasome](#)

Application Details

Application Notes: Optimal working dilution should be determined by the investigator.

Comment: Preparation method: in vitro, wheat germ expression system
Product Quality tested by: 12.5% SDS-PAGE Stained with Coomassie Blue.

Restrictions: For Research Use only

Handling

Buffer: 50 mM Tris-HCl, 10 mM reduced Glutathione, pH =8.0 in the elution buffer.

Handling Advice: Aliquot to avoid repeated freezing and thawing.

Storage: -80 °C

Storage Comment: Best use within three months from the date of receipt of this protein.

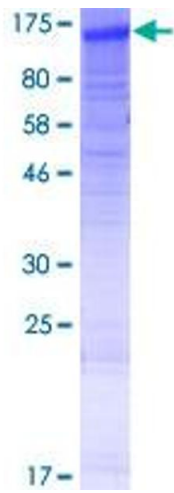


Image 1.