

Datasheet for ABIN1312689

NME2 Protein (AA 51-152) (GST tag)[Go to Product page](#)**1** Image

Overview

Quantity:	10 µg
Target:	NME2
Protein Characteristics:	AA 51-152
Origin:	Human
Source:	Wheat germ
Protein Type:	Recombinant
Purification tag / Conjugate:	This NME2 protein is labelled with GST tag.
Application:	ELISA, Western Blotting (WB), Affinity Purification (AP), Antibody Array (AA)

Product Details

Purpose:	NME2 (Human) Recombinant Protein (Q01)
Sequence:	HYIDLKDRPF FPGLVKYMNS GPVVAMVWEG LNVVKTGRVM LGETNPADSK PGTIRGDFCI QVGRNIIHGS DSVKS AEKEI SLWFKPEELV DYKSCAHDWV YE
Characteristics:	Human NME2 partial ORF (NP_002503, 51 a.a. - 152 a.a.) recombinant protein with GST-tag at N-terminal.
Purification:	in vitro wheat germ expression system

Target Details

Target:	NME2
Alternative Name:	NME2 (NME2 Products)

Target Details

Background:	Full Gene Name: non-metastatic cells 2, protein (NM23B) expressed in Synonyms: MGC111212,NDPK-B,NDPKB,NM23-H2,NM23B,puf
Gene ID:	4831
NCBI Accession:	NM_002512

Application Details

Application Notes:	Optimal working dilution should be determined by the investigator.
Comment:	Preparation method: in vitro, wheat germ expression system Product Quality tested by: 12.5% SDS-PAGE Stained with Coomassie Blue.
Restrictions:	For Research Use only

Handling

Buffer:	50 mM Tris-HCl, 10 mM reduced Glutathione, pH =8.0 in the elution buffer.
Handling Advice:	Aliquot to avoid repeated freezing and thawing.
Storage:	-80 °C
Storage Comment:	Best use within three months from the date of receipt of this protein.

Images

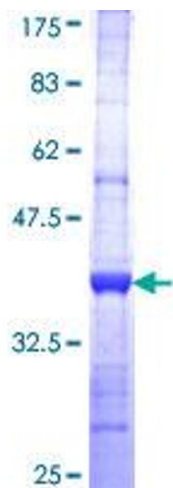


Image 1.