

Datasheet for ABIN1312699

NME5 Protein (AA 121-212) (GST tag)



[Go to Product page](#)

1 Image

Overview

Quantity:	10 µg
Target:	NME5
Protein Characteristics:	AA 121-212
Origin:	Human
Source:	Wheat germ
Protein Type:	Recombinant
Purification tag / Conjugate:	This NME5 protein is labelled with GST tag.
Application:	Western Blotting (WB), ELISA, Affinity Purification (AP), Antibody Array (AA)

Product Details

Purpose:	NME5 (Human) Recombinant Protein (Q01)
Sequence:	DLRNALHGSN DFAAAEREIR FMFPEVIVEP IPIGQAAKDY LNLHIMPTLL EGLTELCKQK PADPLIWLAD WLLKNNPNKP KLCHHPIVEE PY
Characteristics:	Human NME5 partial ORF (NP_003542, 121 a.a. - 212 a.a.) recombinant protein with GST-tag at N-terminal.
Purification:	in vitro wheat germ expression system

Target Details

Target:	NME5
Alternative Name:	NME5 (NME5 Products)

Target Details

Background:	Full Gene Name: non-metastatic cells 5, protein expressed in (nucleoside-diphosphate kinase) Synonyms: NM23-H5,NM23H5
Gene ID:	8382
NCBI Accession:	NM_003551
Pathways:	Nucleotide Phosphorylation , Ribonucleoside Biosynthetic Process , Negative Regulation of intrinsic apoptotic Signaling

Application Details

Application Notes:	Optimal working dilution should be determined by the investigator.
Comment:	Preparation method: in vitro, wheat germ expression system Product Quality tested by: 12.5% SDS-PAGE Stained with Coomassie Blue.
Restrictions:	For Research Use only

Handling

Buffer:	50 mM Tris-HCl, 10 mM reduced Glutathione, pH =8.0 in the elution buffer.
Handling Advice:	Aliquot to avoid repeated freezing and thawing.
Storage:	-80 °C
Storage Comment:	Best use within three months from the date of receipt of this protein.

Images

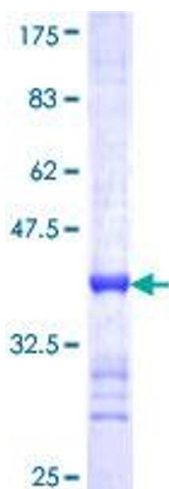


Image 1.