



[Go to Product page](#)

Datasheet for ABIN1312728

NMT2 Protein (AA 1-498) (GST tag)

1 Image

Overview

Quantity:	10 µg
Target:	NMT2
Protein Characteristics:	AA 1-498
Origin:	Human
Source:	Wheat germ
Protein Type:	Recombinant
Purification tag / Conjugate:	This NMT2 protein is labelled with GST tag.
Application:	Western Blotting (WB), ELISA, Affinity Purification (AP), Antibody Array (AA)

Product Details

Purpose:	NMT2 (Human) Recombinant Protein (P01)
Sequence:	MAEDSESAAS QQSLELDDQD TCGIDGDNEE ETEHAKGSPG GYLGAKKKKK KQKRKKEKPN SGGTKSDSAS DSQEIKIQQP SKNPSVPMQK LQDIQRAMEL LSACQGPARN IDEAAKHRYQ FWDTQPVPKL DEVITSHGAI EPDKDNVRQE PYSLPQGF MW DTLDSLDAEV LKELYTLLNE NYVEDDDNMF RFDYSPEFL L WALRPPGWLL QWHCGVRVSS NKKLVGFISA IPANIRIYDS VKKMVEINFL CVHKLRSCR VAPVLIREIT RRVNLEGIFQ AVYTAGVVLP KPIATCRYWH RSLNPKKLV E VKFSLSRNM TLQRTMKLYR LPDVTKTSLG RPMEPKDIKS VRELINTYLK QFHLAPVMDE EEVAHWFLPR EHIIDTFVVE SPNGKLTDFL SFYTL PSTVM HHPAHKSLKA AYSFYNIHTE TPLLDLMSDA LILAKSKGFD VFNALDL MEN KTFLEK LKFG IGDGNLQYYL YNWRCPGTDS EKVGLVLQ
Characteristics:	Human NMT2 full-length ORF (AAH06376, 1 a.a. - 498 a.a.) recombinant protein with GST-tag at N-terminal.

Product Details

Purification: in vitro wheat germ expression system

Target Details

Target: NMT2

Alternative Name: NMT2 ([NMT2 Products](#))

Background: Full Gene Name: N-myristoyltransferase 2
Synonyms:

Gene ID: 9397

Pathways: [Regulation of G-Protein Coupled Receptor Protein Signaling](#)

Application Details

Application Notes: Optimal working dilution should be determined by the investigator.

Comment: Preparation method: in vitro, wheat germ expression system
Product Quality tested by: 12.5% SDS-PAGE Stained with Coomassie Blue.

Restrictions: For Research Use only

Handling

Buffer: 50 mM Tris-HCl, 10 mM reduced Glutathione, pH =8.0 in the elution buffer.

Handling Advice: Aliquot to avoid repeated freezing and thawing.

Storage: -80 °C

Storage Comment: Best use within three months from the date of receipt of this protein.

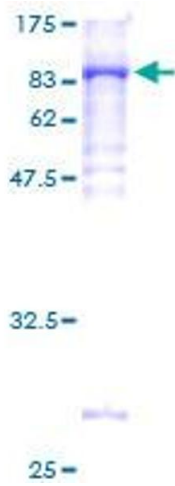


Image 1.