



Datasheet for ABIN1312755
NOC4L Protein (AA 1-516) (GST tag)



[Go to Product page](#)

1 Image

Overview

Quantity:	10 µg
Target:	NOC4L
Protein Characteristics:	AA 1-516
Origin:	Human
Source:	Wheat germ
Protein Type:	Recombinant
Purification tag / Conjugate:	This NOC4L protein is labelled with GST tag.
Application:	ELISA, Western Blotting (WB), Affinity Purification (AP), Antibody Array (AA)

Product Details

Purpose:	NOC4L (Human) Recombinant Protein (P01)
Sequence:	MEREPGAAGV RRALGRRLEA VLASRSEANA VFDILAVLQS EDQEEIQEAV RTCSRLFGAL LERGELFVGQ LPSEEMVMTG SQGATRKYKV WMRHRYHSCC NRLGELLGHP SFQVKELALS ALLKFVQLEG AHPLEKSKWE GNYLFPRELF KLVVGGLLSP EEDQSLLLSQ FRELDYDDT RYHTMQAAVD AVARVTGQHP EVPPAFWNNA FTLLSAVSLP RREPTVSSFY VKRAELWDTW KVAHLKEHRR VFQAMWLSFL KHKLPLSLYK KVLLIVHDAI LPQLAQPTLM IDFLTRACDL GGALSLLALN GLFILIHKHN LEYPDFYRKL YGLLDPSVFH VKYRARFFHL ADLFLSSSHL PAYLVAAFAK RLARLALTAP PEALLMVLPF ICNLLRRHPA CRVLVHRPHG PELDADPYDP GEEDPAQSRA LESSLWELQA LQRHYHPEVS KAASVINQAL SMPEVSIAPL LELTAYEIFE RDLKKKGPEP VPLEFIPAQG LLGRPGELCA QHFTLS
Characteristics:	Human NOC4L full-length ORF (NP_076983.1, 1 a.a. - 516 a.a.) recombinant protein with GST-tag at N-terminal.

Product Details

Purification: in vitro wheat germ expression system

Target Details

Target: NOC4L

Alternative Name: NOC4L ([NOC4L Products](#))

Background: Full Gene Name: nucleolar complex associated 4 homolog (S. cerevisiae)
Synonyms: MGC3162,NOC4

Gene ID: 79050

NCBI Accession: [NM_024078](#)

Application Details

Application Notes: Optimal working dilution should be determined by the investigator.

Comment: Preparation method: in vitro, wheat germ expression system
Product Quality tested by: 12.5% SDS-PAGE Stained with Coomassie Blue.

Restrictions: For Research Use only

Handling

Buffer: 50 mM Tris-HCl, 10 mM reduced Glutathione, pH =8.0 in the elution buffer.

Handling Advice: Aliquot to avoid repeated freezing and thawing.

Storage: -80 °C

Storage Comment: Best use within three months from the date of receipt of this protein.

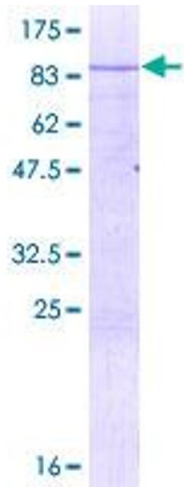


Image 1.