



Datasheet for ABIN1312771  
**NOL4 Protein (AA 1-422) (GST tag)**



[Go to Product page](#)

1 Image

### Overview

Quantity:	10 µg
Target:	NOL4
Protein Characteristics:	AA 1-422
Origin:	Human
Source:	Wheat germ
Protein Type:	Recombinant
Purification tag / Conjugate:	This NOL4 protein is labelled with GST tag.
Application:	ELISA, Western Blotting (WB), Affinity Purification (AP), Antibody Array (AA)

### Product Details

Purpose:	NOL4 (Human) Recombinant Protein (P01)
Sequence:	MHVETGPNGE QIRKHAGQKR TYKAISESYA FLPREAVTRF LMSCSECQKR MHLNPDGTDH KDNGKPPTLV TSMIDYNMPI TMAYMKHMKL QLLNSQQDED ESSIESDEFD MSDSTRMSAV NSDLSSNLEE RMQSPQNLHG QQDDDSAAES FNGNETLGHS SIASGGTHSR EMGDSNSDGK TGLEQDEQPL NLSDSPLSAQ LTSEYRIDDH NSNGKNKYKN LLISDLKMER EARENGSKSP AHSYSSYDSG KNESVDRGAE DLSLNRGDED EDDHEDHDDS EKVNETDGVE AERLKAFNDE SAPADKQCKP EATQATYSTS AVPGSQDVLY INGNGTYSYH SYRGLGGGLL NLNDASSSGP TDLSMKRQLA TSSGSSSSSN SRPQLSPTEI NAVRQLVAGY RESAAFLLRs ADELENLILQ QN
Characteristics:	Human NOL4 full-length ORF ( AAH00313.1, 1 a.a. - 422 a.a.) recombinant protein with GST-tag at N-terminal.
Purification:	in vitro wheat germ expression system

## Target Details

Target:	NOL4
Alternative Name:	NOL4 ( <a href="#">NOL4 Products</a> )
Background:	Full Gene Name: nucleolar protein 4 Synonyms: HRIHFB2255,NOLP
Gene ID:	8715

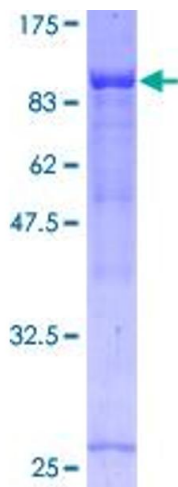
## Application Details

Application Notes:	Optimal working dilution should be determined by the investigator.
Comment:	Preparation method: in vitro, wheat germ expression system Product Quality tested by: 12.5% SDS-PAGE Stained with Coomassie Blue.
Restrictions:	For Research Use only

## Handling

Buffer:	50 mM Tris-HCl, 10 mM reduced Glutathione, pH =8.0 in the elution buffer.
Handling Advice:	Aliquot to avoid repeated freezing and thawing.
Storage:	-80 °C
Storage Comment:	Best use within three months from the date of receipt of this protein.

## Images



**Image 1.**