



[Go to Product page](#)

Datasheet for ABIN1312777
NOL7 Protein (GST tag)

1 Image

Overview

Quantity:	10 µg
Target:	NOL7
Origin:	Human
Source:	Wheat germ
Protein Type:	Recombinant
Purification tag / Conjugate:	This NOL7 protein is labelled with GST tag.
Application:	ELISA, Western Blotting (WB), Antibody Array (AA), Affinity Purification (AP)

Product Details

Purpose:	NOL7 (Human) Recombinant Protein (P01)
Sequence:	MVQLRPRASR APASAEAMVD EGQLASEEEE AEHGLLLGQP SSGAAAEPL EDEEGDDEFD DEAPEELTFA SAQAEAREEE RRVRET VRRD KTLLEKRRKR REELFIEQKK RKLLPD TILE KLTTASQTN I KKSPGKVKEV NLQKKNEDCE KGNSDKKVKV QKVQSVSQNK SYLAVRLKDQ DLRDSRQQA QAFIHNSLYG PGTNRRTTVNK FLANKRSLP VKRAAVQFLN NAWGIQKKQN AKRFKRRWMV RKMKTCK
Characteristics:	Human NOL7 full-length ORF (NP_057251.2, 1 a.a. - 257 a.a.) recombinant protein with GST-tag at N-terminal.
Purification:	in vitro wheat germ expression system

Target Details

Target:	NOL7
---------	------

Target Details

Alternative Name: NOL7 ([NOL7 Products](#))

Background: Gene: nucleolar protein 7, 27kDa
Synonyms: C6orf90, MGC71933, PQBP3, RARG-1, dJ223E5.2

Gene ID: 51406

NCBI Accession: [NM_016167](#)

Application Details

Application Notes: Optimal working dilution should be determined by the investigator.

Restrictions: For Research Use only

Handling

Buffer: 50 mM Tris-HCl, 10 mM reduced Glutathione, pH =8.0 in the elution buffer.

Handling Advice: Aliquot to avoid repeated freezing and thawing.

Storage: -80 °C

Storage Comment: Best use within three months from the date of receipt of this protein.

Images

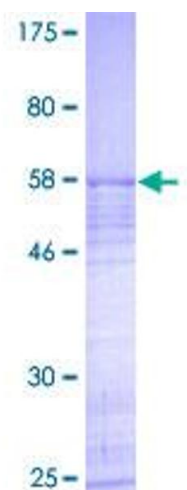


Image 1.